

Ninja ZX-6R
Ninja ZX-6RR
Ninja ZX-10R



Kawasaki FI Calibration Tool Instruction Manual

IMPORTANT

This manual provides how to change the fuel injection amount, sub-throttle opening, and ignition timing of the racing ECU for the 2005 Ninja ZX-6RR/ZX-10R, 2006 Ninja ZX-10R, 2007 Ninja ZX-6R and 2008 Ninja ZX-10R. This manual instructs the dealing method briefly for the mechanic and being familiar with the personal computer (PC).

As for the basic knowledge, refer to the base Service Manual for the Ninja ZX-6R, ZX-6RR and ZX-10R.

ZX600-N1: P/No. 99924-1346-01

ZX1000-C2: P/No. 99924-1322-02

ZX1000D6F: P/No. 99924-1365-01

ZX600P7F: P/No. 99924-1382-01

ZX1000E8F: P/No. 99924-1388-01

AFTER ANY MODIFICATION TO TUNE THE VEHICLE TO A COMPETITION MACHINE, IT SHOULD NOT BE USED ON PUBLIC STREETS, ROADS OR HIGHWAYS. THE USE OF THIS VEHICLE SHOULD BE LIMITED TO PARTICIPATION IN SANCTIONED COMPETITION EVENTS UPON A CLOSED COURSE.

User License Agreement For Kawasaki FI Calibration Tool

This User License Agreement ("AGREEMENT") is a legal agreement between you (either an individual or a single entity) and Kawasaki Heavy Industries, Ltd., a Japanese company, ("Kawasaki") for the Kawasaki FI Calibration Tool Software ("SOFTWARE"). By installing, copying, or otherwise using the SOFTWARE, you shall agree to be bound by the terms of this AGREEMENT. If you will not agree to the terms of this AGREEMENT, promptly uninstall the SOFTWARE and destroy all the SOFTWARE, including its COPY if you have made one.

1. COPYRIGHT

All title and copyrights in and to the SOFTWARE (including but not limited to any images, photographs, and text incorporated into the SOFTWARE) and the accompanying printed materials are owned by Kawasaki and/or its licensor. The SOFTWARE is protected by copyright laws and international treaty provisions.

2. GRANT OF LICENSE

- (1) By purchasing the SOFTWARE, you are granted a license to use the SOFTWARE under following conditions (2) and (3).
- (2) USE: The SOFTWARE is licensed, not sold. You may install and use one copy of the SOFTWARE on your computer.
- (3) COPY: You may either (a) make one copy of the SOFTWARE solely for backup or archival purposes or (b) install the SOFTWARE on a single computer provided you keep the original solely for backup or archival purposes. All title and copyrights in and to the COPY are also owned by Kawasaki and/or its licensor, and you may not use the COPY for any other purpose than to recover the SOFTWARE on your computer.

3. LIMITATIONS

You may not modify, reverse engineer, decompile, or disassemble the SOFTWARE.

4. SOFTWARE TRANSFER

You may permanently transfer all of your rights under this AGREEMENT when the recipient agrees to the terms of this AGREEMENT, provided you retain no copies, you transfer all of the SOFTWARE and printed materials accompanied with it.

5. TERMINATION

Without prejudice to any other rights, Kawasaki may terminate this AGREEMENT if you fail to comply with the terms and conditions of this AGREEMENT. In such event, you must uninstall the SOFTWARE and destroy all of the SOFTWARE, including its COPY if you have made one.

6. LIMITED WARRANTY

- (1) **CUSTOMER REMEDIES:** Kawasaki's and its suppliers' entire liability and your exclusive remedy shall be replacement of the SOFTWARE. This Limited Warranty is void if failure of the SOFTWARE has resulted from accident, abuse or misapplication
- (2) **NO OTHER WARRANTIES:** To the maximum extent permitted by applicable law, Kawasaki and its suppliers disclaim all other warranties, either express or implied, including, but not limited to, implied warranties of merchantability and fitness for a particular purpose, with regard to the SOFTWARE. This limited warranty gives you specific legal rights. You may have others, which vary from country, state or territory and jurisdiction to country, state or territory and jurisdiction.
- (3) **NO LIABILITY FOR CONSEQUENTIAL DAMAGES INCLUDING PERSONAL INJURY AND LOSS OF LIFE:** To the maximum extent permitted by applicable law, in no event shall Kawasaki or its suppliers be liable for any special, incidental, indirect, or consequential damages including personal injury and loss of life whatsoever (including, without limitation, damages for loss of business profits, business interruption, loss of business information, or any other pecuniary loss) arising out of the use of or inability to use the SOFTWARE, even if Kawasaki has been advised of the possibility of such damages. Because some countries, states or territories and jurisdictions do not allow exclusion or limitation of liability for consequential or incidental damages, the above limitation may not apply to you.

7. EXPORT LIMITATION

You shall agree not to export the SOFTWARE to foreign countries except for complying with local laws and rules.

8. COMMERCIAL ARBITRATION

In case of trouble with the AGREEMENT, both parties assign Japan Commercial Arbitration Association and under the rule thereof to settle a dispute and the award thereof shall be final and binding upon both parties.

Contents

1. Kawasaki FI Calibration Tool Outline	6
1.1 System Function	6
1.2 Personal Computer (PC) Requirement	7
1.3 System Configuration	8
2. Installation Procedure of Setting Program	10
2.1 Installing Procedure	10
2.2 File Structure	14
2.3 Uninstalling Procedure	15
3. Operating the Program	17
3.1 Starting	17
3.2 Each Map Edit Method	20
3.2.1 Map Edit	20
3.2.2 Map Axis Edit	23
3.2.3 Multi Map Edit	24
3.2.4 Individual Value Edit	25
3.3 Changing ECU Data	29
3.4 Other Functions	33
3.4.1 Monitoring Function	33
3.4.2 Title Editor (Memo)	35
3.4.3 Default Folder Setting Function	35
3.5 File Saving	36
3.6 Changing the Target Machine	36
3.7 New Usable Functions	37
3.7.1 Plural Cells Data Selecting	37
3.7.2 Plural Cells Data Copying	37
3.7.3 Plural Cells Data Changing Method	38
4. Menu List	39
4.1 Pull down Menu	39
4.1.1 File	39
4.1.2 Edit	39
4.1.3 Monitor	39
4.1.4 Set	39
4.1.5 Window	40
4.1.6 Help	40
4.2 Tool Bar (Icon)	40

5. Appendix	41
5.1 Connecting Method	41
5.1.1 '05 ZX-6RR	41
5.1.2 '06 ZX-10R.....	43
5.1.3 '07 ZX-6R.....	45
5.1.4 '08 ZX-10R.....	47
5.2 Caution Items when using the I/F Box	50
5.2.1 Caution when using the I/F Box.....	50
5.2.2 System Requirements of I/F Box.....	50
5.2.3 Caution when communicating between Setting Tool and ECU.....	50
5.3 Troubleshooting	51

1. Kawasaki FI Calibration Tool Outline

1.1 System Function

Kawasaki FI Calibration Tool (FI Tool) is developed to modify the mapping of the racing machine to gain operating conditions suitable for the course and the rider's skill. The following are the available setting functions.

Table 1 FI Tool Function

Model Name Functions	Available Setting Range	'05 ZX-6RR (ZX600N)	'05 ZX-10R (ZXT00C2)	'06 ZX-10R (ZXT00D)	'07 ZX-6R (ZX600P)	'08 ZX-10R (ZXT00E)
1) Adjust the injected fuel rate at acceleration	-30 % ~ +30 %	○	○	○	○	○
2) Adjust the injected fuel rate of #1 and #4 cylinders	-30 % ~ +30 %	○	○	○	○	○
3) Adjust the injected fuel rate of #2 and #3 cylinders	-30 % ~ +30 %	○	○	○	○	○
4) Adjust the injected fuel rate of primary and secondary injector*	-10 % ~ +10 % -20 % ~ +20 %	○ --	-- --	-- --	○ --	-- ○
5) Adjust the ignition timing	-15°CA~ +5°CA	○	○	○	○	○
6) Adjust the sub-throttle opening angle	-50 % ~ +50 % -45 % ~ +45 %	-- ○	○ --	○ --	-- ○	○ --
7) Adjust the exhaust device opening angle	-50 % ~ +50 %	--	○	○	--	--
8) Adjust the all injected fuel rates of all cylinders and operating area simultaneously	-30 % ~ +30 %	○	○	○	○	○
9) Adjust the value of engine over revolution limiter	0 ~ +300 rpm -1000 ~ +700rpm -1000 ~+1000rpm -1000 ~+1200rpm	○ -- -- --	-- ○ -- --	-- -- -- ○	○ -- -- --	-- -- ○ --
10) Set the fuel cut or not at deceleration	Use or Not Use	○	○	○	○	○
11) Set the exhaust device controlled or not	Controlled or Full Open Fixed	○	○	○	○	--
12) Set the Auto Shifter Ignition Cut Length	Controlled or not, set Ig. Cut Time by gear range	--	○	○	○	○
13) Set the Pit Road RPM Limit	Controlled or not, set Upper Limit RPM by gear range	--	○	○	○	○
14) Revolution increase/decrease of outside shift indicator	Controlled or not, set the revolution	--	○	○	○	○

Model Name Functions	Available Setting Range	'05 ZX-6RR (ZX600N)	'05 ZX-10R (ZXT00C2)	'06 ZX-10R (ZXT00D)	'07 ZX-6R (ZX600P)	'08 ZX-10R (ZXT00E)
15) Gear ratio of Kit Transmission	Use or not use, set the gear ratio	--	--	○	○	○
16) Set the rev spike controlled or not	Controlled or not, set the sensitivity or retard level	--	--	--	--	○
17) Set the launch controlled or not	Controlled or not, set RPM in starting	--	--	--	--	○

Note: ○ mark shows the model has the function.

Note: * +: primary injector rate down and secondary injector rate up.

-: primary injector rate up and secondary injector rate down.

Note: CA shows rotating angle of crankshaft.

Note: On set the Auto Shifter (12) '07 ZX-6R has both cut time settings by ignition cut length or fuel cut.

1.2 Personal Computer (PC) Requirement

The Kawasaki FI Calibration system operates on a Personal Computer (PC) having a serial communication port with the racing electronic control unit (ECU) on the motorcycle through an interface box (I/F Box).

Table 2 PC Requirement

Items	Recommendation
Operating System	Windows XP (US version, Japanese version)
CPU	Pentium 150 MHz or faster
Memory	64 MB or more
Hard Disk Drive	2 MB or more of free space
Display Resolution	1024 x 768 pixels or more, more than 256 colors
Port Connector	RS232C (D-sub 9 pin), I/F Box cable can be connected to COM 1 ports
Other	Equipped with a mouse or a pointer equivalent to mouse

NOTE

- *Even if the recommended PC is used, the Kawasaki FI Calibration Tool program could not operate correctly depending on the other applications installed to the PC.*
- *If your PC does not equip 9-pin connector, use a suitable RS232C-USB adapter. Some adapter cannot be communicated correctly depending on its specification.*

1.3 System Configuration

The Kawasaki FI Calibration tool kit consists of (1) Racing ECU, (2) Racing Main Harness or Standard Harness plus Racing Sub-harness, (3) I/F Box, and (4) Setting Program. The Setting Program must be installed to your PC.

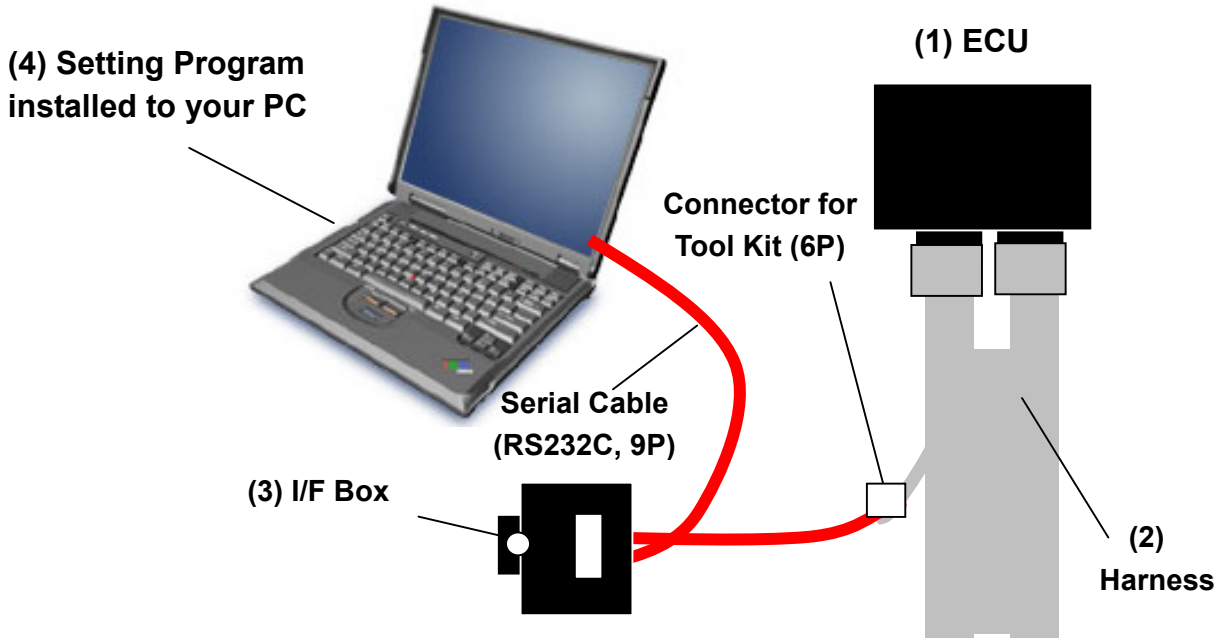


Fig. 1 Setting Tool Connection

Table 3-1 Setting Tool for ZX600N

Meter Type	Optional Meter	Original Meter
ECU	Racing ECU P/No. 21175-0074	
I/F-BOX	Racing I/F-BOX P/No. 26031-0025 or 26031-0240 (Whichever is available.)	
Harness	Racing Main Harness P/No. 26031-0325	(1) Racing Main Harness P/No. 26031-0326 or (2) Racing Sub-harness P/No. 26031-0327 plus Std. Main Harness P/No. 26031-1058
Setting Program	CD or FD	

Table 3-2 Setting Tool for ZXT00D

Meter Type	Optional Meter	Original Meter
ECU	Racing ECU P/No. 21175-0096	
I/F BOX	Racing I/F-BOX P/No. 26031-0025 or 26031-0240 (Whichever is available.)	
Harness	Racing Main Harness P/No. 26031-0425	(1) Racing Main Harness P/No. 26031-0426 or (2) Racing Sub-harness P/No. 26031-0427 plus Std. Main Harness
Shift SW	Contact type of SW can be used. Recommend the Shift Sensor made by Battle Factory or Dynojet.	
Setting Program	CD or FD	

Table 3-3 Setting Tool for ZX600P

Meter Type	Optional Meter	Original Meter
ECU	Racing ECU P/No. 21175-0145	
I/F-BOX	Racing I/F-BOX P/No. 26031-0025 or 26031-0240 (Whichever is available.)	
Harness	Racing Main Harness P/No. 926031-0559	(1) Racing Main Harness P/No. 26031-0558 or (2) Racing Sub-harness P/No. 26031-0039 plus Std. Main Harness P/No. 26031-0561
Setting Program	CD or FD	

Table 3-4 Setting Tool for ZXT00E

Meter Type	Optional Meter	Original Meter
ECU	Racing ECU P/No. 21175-0212	
I/F BOX	Racing I/F-BOX P/No. 26031-0025 or 26031-0240 (Whichever is available.)	
Harness	Racing Main Harness P/No. 26031-0699	(1) Racing Main Harness P/No. 26031-0698 or (2) Racing Sub-harness P/No. 26031-0700 plus Std. Main Harness
Shift SW	Contact type of SW can be used. Recommend the Shift Sensor made by Battle Factory or Dynojet.	
Setting Program	CD or FD	

Remarks: The detail of connecting method is shown in section 5.1.

NOTE: See '04 and '05 instruction manual for ZXT00C setting tools.

2. Installation Procedure of Setting Program

Program files will be supplied to users through Internet from “**kawasakidirect**”.
Download the Software “**Kawasaki FI Calibration. EXE**” to your PC and uncompress to suitable folder

NOTE

- *Before installing the new Setting Program to the PC in which old version Program is installed, save the old .est files as back-up and then un-install the previous Program.*

2.1 Installing Procedure

- (1) Execute **Setup.exe** to start the Setup program.
- (2) Then the screen shown in Fig. 2 appears.

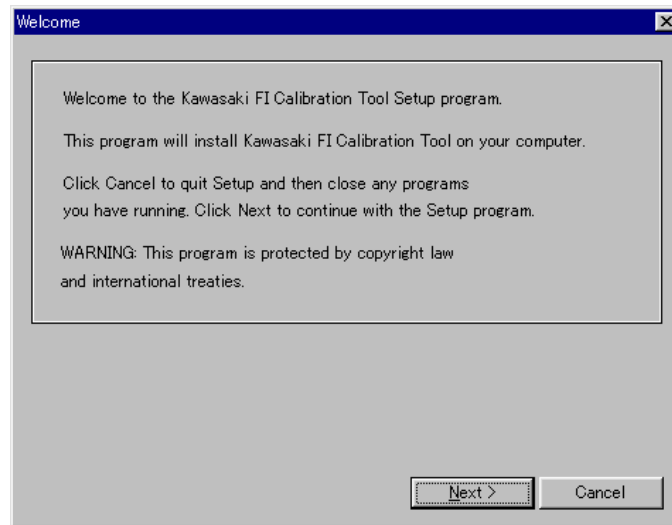


Fig. 2 Setting Screen of Setup Program

Click **Next** to install the Program. Click **Cancel** to stop installing procedure.

- (3) The Product License Agreement screen shown in Fig. 3 appears.

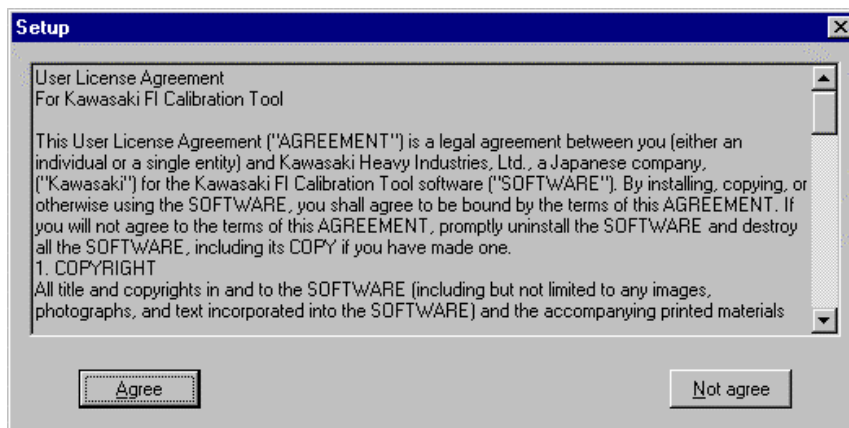


Fig. 3 Product License Agreement

Click **Agree** when you agree to the Product License Agreement. Click **Not agree** when you do not agree to the Product License Agreement. Then the installing procedure is stopped.

- (4) Next the Serial Information screen shown in Fig. 4 appears.
Enter the information in both columns.

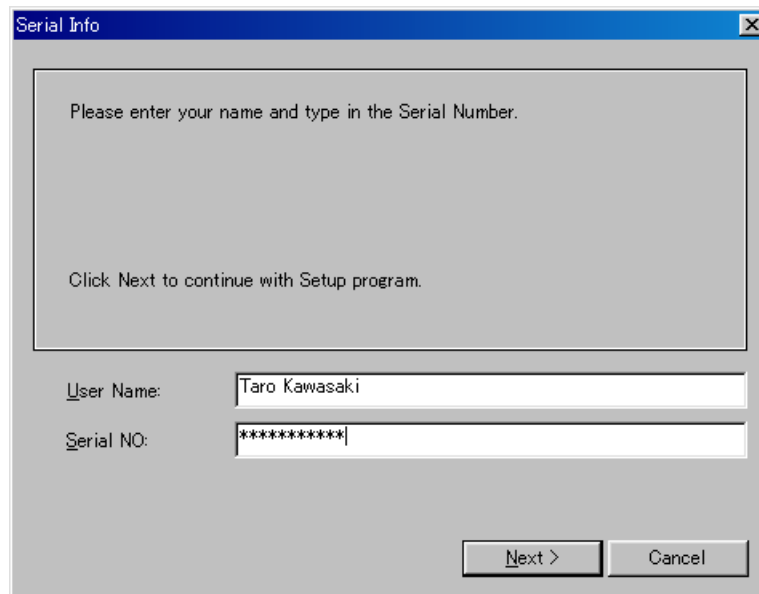
A dialog box titled "Serial Info" with a blue title bar and a close button. The main area contains the text: "Please enter your name and type in the Serial Number." and "Click Next to continue with Setup program." Below this are two input fields: "User Name:" with the text "Taro Kawasaki" and "Serial NO:" with "*****". At the bottom right are two buttons: "Next >" and "Cancel".

Fig. 4 User Information Registration / Authentication (Sample)

The Serial No is informed to you from the dealer.
The default settings of **User Name** and **Serial No** are vacant.
If you omit any of them, **Next** button is grayed out.

When the Serial No is wrong, an error message shown in Fig. 5 appears on the screen.
Input the correct Serial No in the column.



Fig. 5 Error Message

Click **Next** to install the Program. Click **Cancel** to stop the installing procedure.

(5) The destination folder selection screen shown in Fig. 6.appears.

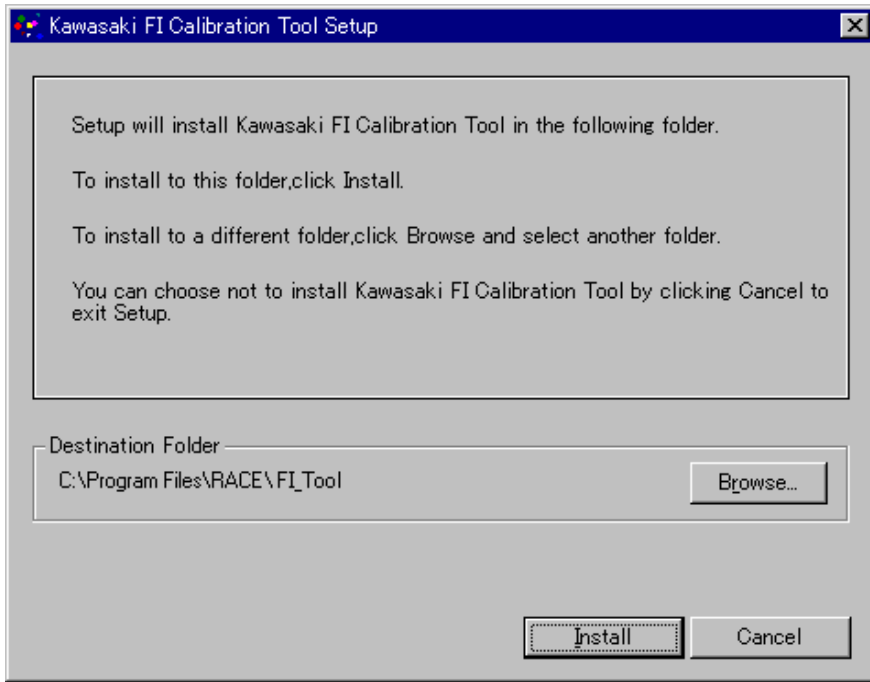


Fig. 6 Choosing Destination Folder

Choose the destination folder. The default setting is **C:\Program Files\RACE\FI-Tool**.

If you want to install the Program to another folder, click the **Browse** button to display the **Choose Folder** screen shown in Fig. 7. Then choose the folder.

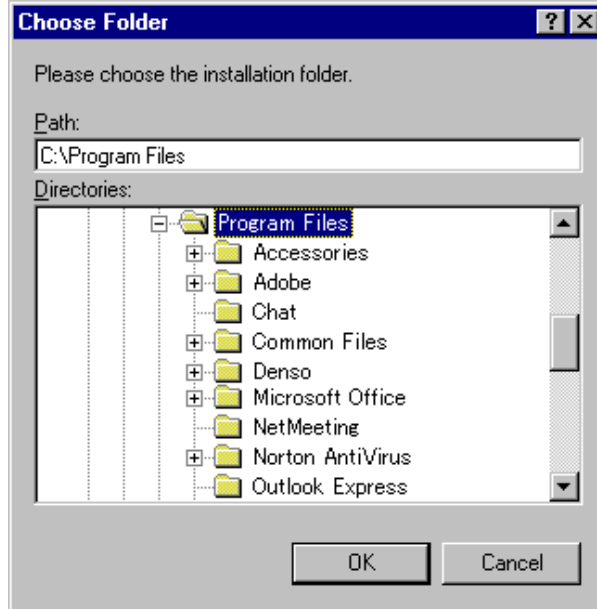


Fig. 7 Choose Folder Screen

Click **Install** to start the installing procedure. Click **Cancel** to stop the installing procedure.

- (6) After the **Kawasaki FI Calibration Tool program** is installed, the Setup finish screen shown in Fig. 8 appears.



Fig. 8 Setup Finish Screen

If the destination folder has a file that has the same name of the file to be copied and whose time stamp is newer than that for the file to be copied, the message screen shown in Fig. 9 appears and the file cannot be copied. However, the installing procedure is normally finished because the destination folder has the new data file with newer time stamp.

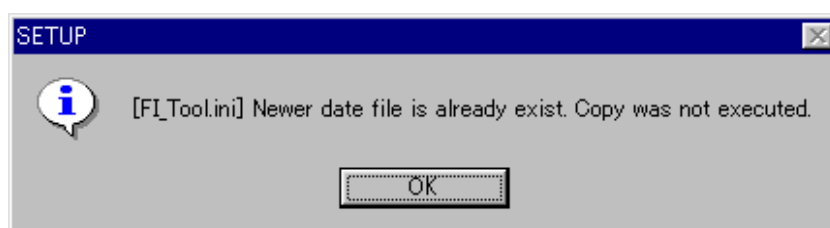


Fig. 9 Message Dialog when overwriting was not performed

- (7) Click **OK** button to finish the setup. After the setup is finished, the shortcut icon for **Kawasaki FI Calibration Tool** program is registered on both the Desktop and the Start Menu.

Click **Cancel** during the setup operation to quit the setup.

- (8) Before starting **Kawasaki FI Calibration Tool**, restart your PC.

2.2 File Structure

- Files to be copied into a destination folder

FI_Tool.exe	Program file
FI_Tool.bmp	256-color splash screen file
FI_Tool FC.bmp	Full-color splash screen file
MCN_LIST.DAT	
Setup.exe	Uninstall file for execution

- Files to be copied into the ZXT00E folder under the destination folder.

FI_Tool.ini	Setting file for FI_Tool.exe of ZXT00E
FI_Tool.stz	ZXT00E Configuration File

- Files to be copied into the ZXT00E Work Folder

Standard_data.est	Data file for only ZXT00E
-------------------	---------------------------

- Files to be copied into the ZX600P folder under the destination folder.

FI_Tool.ini	Setting file for FI_Tool.exe of ZX600P
FI_Tool.stz	ZX600P Configuration File

- Files to be copied into the ZX600P Work Folder

Standard_data.est	Data file for only ZX600P
-------------------	---------------------------

- Files to be copied into the ZXT00D folder under the destination folder.

FI_Tool.ini	Setting file for FI_Tool.exe of ZXT00D
FI_Tool.stz	ZXT00D Configuration File

- Files to be copied into the ZXT00D Work Folder

Standard_data.est	Data file for only ZXT00D
-------------------	---------------------------

- Files to be copied into the ZXT00C2 folder under the destination folder.

FI_Tool.ini	Setting file for FI_Tool.exe of ZXT00C2
FI_Tool.stz	ZXT00C Configuration File

- Files to be copied into the ZXT00C2 Work Folder

Standard_data.est	Data file for only ZXT00C2
-------------------	----------------------------

- Files to be copied into the ZX600N folder under the destination folder.

FI_Tool.ini	Setting file for FI_Tool.exe of ZX600N
FI_Tool.stz	ZX600N Configuration File

- Files to be copied into the ZX600N Work Folder

Standard_data.est	Data file for only ZX600N
-------------------	---------------------------

Note: When over-installing under the condition that the folders of ZX600K, ZX600M and ZXT00C are existed in the designated folders and in each folder the setting file is existed, those folders of ZX600K, ZX600M and ZXT00C are added in the machine select list.

2.3 Uninstalling Procedure

Uninstalling operation can be executed on the **Add/Remove** service application in the **Control Panel**.

(1) Open the **Control Panel** screen from **My Computer** or **Explorer** screen.



Fig. 10 Control Panel Screen

Then click the **Add/Remove** icon.

(2) Add/Remove Programs Properties screen appears.

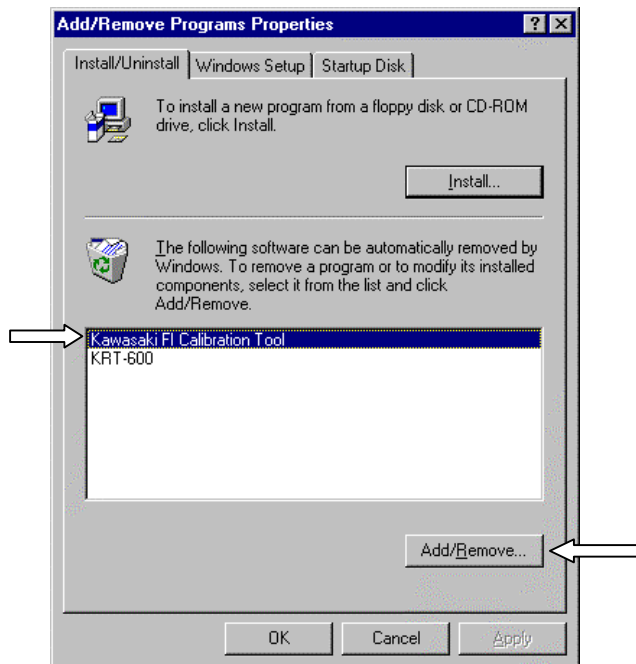


Fig. 11 Add/Remove Programs Properties screen

Click **FI Calibration Tool** and then click **Add/Remove** to start the Setup program.

(3) The screen shown in Fig. 12 appears.

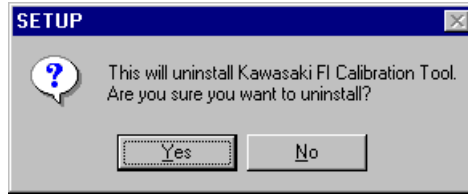


Fig. 12 Uninstall Starting Screen

Click **Yes** to start the uninstalling procedure.

(4) After the uninstallation is completed, Uninstall Completion screen shown in Fig. 13 appears.

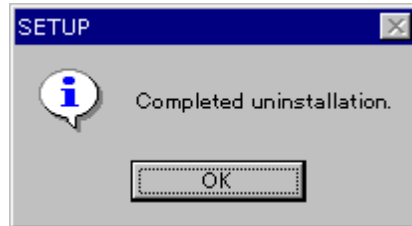


Fig. 13 Uninstall Completion Screen

If you tried to delete the program but you couldn't do it due to some reason (ex. the program is starting), the message shown in Fig. 14 appears. In such case, delete the files remaining in the screen folder by yourself.

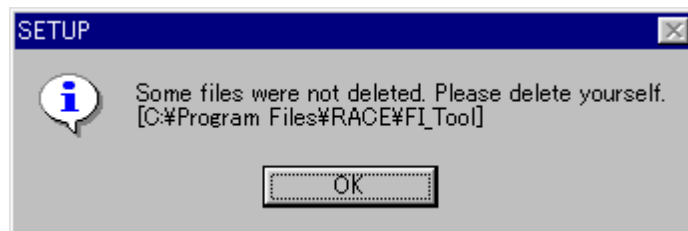


Fig. 14 Message Dialog when some files were not deleted

(5) Click **OK** button to complete the uninstalling procedure.

In this step, setup.exe is left in the FI Calibration Tool folder, but it will be deleted when you start the PC next time.

NOTE

- *When restarting after uninstallation is finished, the DOS window may remain open. (It occurs on Windows 95, 98, Me.) At that time close the window by yourself.*

3. Operating the Program

This chapter explains on the newest model '08 ZX10-R for an example.

3.1 Starting

- (1) Double-click the shortcut icon **Kawasaki FI Calibration Tool** on the Desktop screen or click the **Kawasaki FI Calibration Tool** in Program Menu on Start Menu.
- (2) Then Machine Select screen shown Fig. 15 appears.

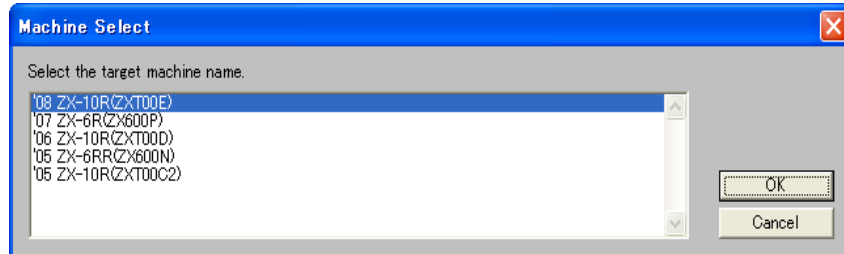


Fig. 15 Machine Select Screen

Click the target machine name, then click **OK** button or press **Enter (Return)** key.

If you want to stop, click **Cancel** button.

This window only appears right after starting the program when installed initially. From next time the pre-referenced model is automatically viewed.

Refer to the 3.6 Changing the Target Machine for changing models.

- (3) The initial screen shown in Fig. 16 appears.

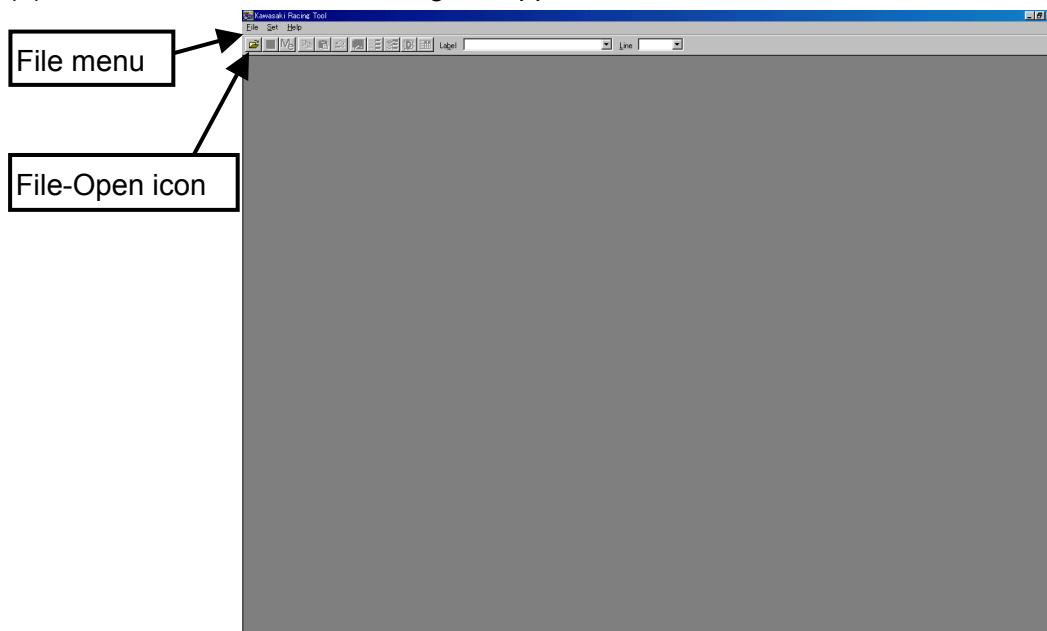


Fig. 16 Initial Screen

It starts to load the data file (EST file) to be edited on the initial screen.

Go to the pull-down **File** menu and select **Open**, or click the **File - Open** icon (left end) on the toolbar.

(4) The Open dialog shown in Fig. 17 appears.

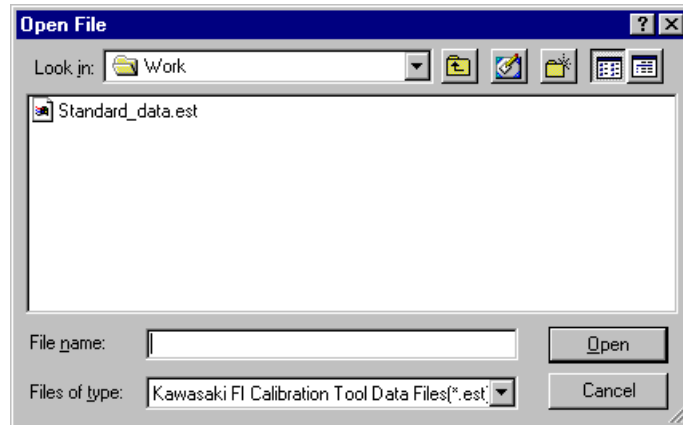


Fig. 17 Open Dialog

Click the data file to be edited in the Open dialog screen. The selected data file name is shown in the File name. Then click the **Open** button.

(5) The Menu dialog screen shown in Fig. 18 appears.

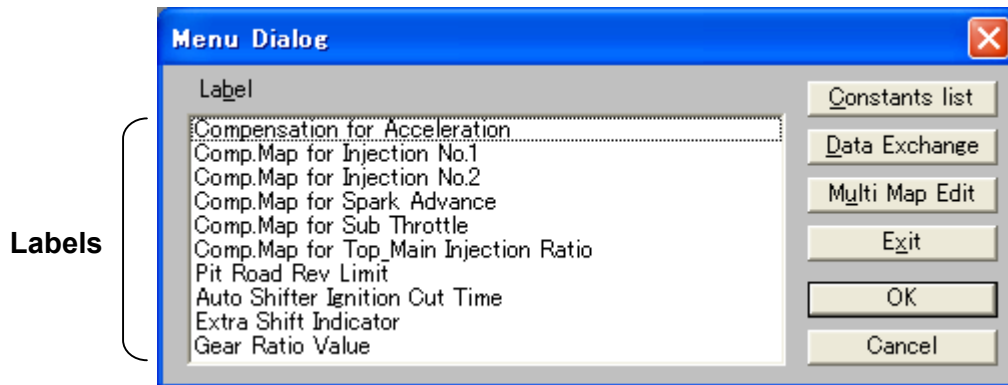


Fig. 18 Menu Dialog (in case of ZXT00E)

Select the mode to be edited in the Menu dialog.

The modes that can be used are as follows:

<Map Edit> Mode (in case of ZXT00E)

In this Mode you can edit the “Compensations” below.

Click one **Label** in the Menu dialog and click the **OK** button or **Enter (Return)** key, or double click one **Label**, to display the Map Edit screen.

“Compensation for Acceleration”:

Regulates the rate of fuel injection at acceleration

“Comp. Map for Injection No.1”:

Regulate the rate of fuel injection at normal operation (For the #1 and #4 cylinders)

“Comp. Map for Injection No.2”:

Regulate the rate of fuel injection at normal operation (For the #2 and #3 cylinders)

“Comp. Map for Spark Advance”: Regulate the ignition timing

“Comp. Map for Sub Throttle”: Regulate the sub-throttle opening

“Comp. Map for Top_Main Injection Rate”:

Regulate the rate of primary and secondary fuel injection

“**Pit Road Rev Limit**” : Regulate the pit road RPM limit.

“**Auto Shifter Ignition Cut Time**” : Regulate the ignition cut time at auto shifting

“**Extra Shift Indicator**” : Regulate the shift indicate RPM

“**Gear Ratio Value**” : Adjust the gear ratio when using the kit transmission.

<Setting Values Edit> Mode (in Case of ZXT00E)

In this Mode you can edit the eleven Values below.

Click the **Constants list** button to display the Setting Values Edit screen.

“**OverRev shift Value**”: Regulate the off-set value from the standard Over Rev Limiter.

“**Select Fuel Cut [Use: 0 / Not Use: 1]**”: Set the fuel-cut at deceleration.

“**All Area Fuel Compensation Value**”:

Regulate the rate of fuel injection for all operating ranges

“**Select Auto Shifter [Use: 0 / Not Use: 1]**”:

Set the auto shifter control.

“**Select Pit Road Rev Limit [Use: 0/ Not Use: 1]**”:

Set the pit road RPM limit control.

“**Select Rev Spike Control**” [Use: 0 / Not Use :1] ”: Set the rev spike control.

“**Rev Spike Control Sensitivity [1 - 10]** ”: Regulate the sensitivity of rev spike control.

“**Rev Spike Control Retard Level [1 - 10]** ”: Regulate the retard level of rev spike control.

“**Select Gear Ratio**” [Std: 0 / Kit Transmission: 1]”: Set the gear ratio.

“**Select Launch Control**” [Use: 0/ Not Use: 1] ” : Set the launch control.

“**Launch Control Rev Limit shift Value**” : Regulate RPM limit under the launch control.

<ECU Data Exchange> Mode

Click the **Data Exchange** button in the Menu dialog to display the Data Exchange screen.

Click this button when you want to load the data in the ECU or write the edited data in the ECU.

<Multi Map Edit> Mode

Click the **Multi Map Edit** button in the Menu dialog to display the Multi Map Edit screen.

The Multi Map Edit can be used for the “**Comp. Map for Injection No.1 and No.2**” and map edit for all cylinders can be carried out at the same time.

3.2 Each Map Edit Method

3.2.1 Map Edit

Select one Label in the Menu dialog and click the **OK** button or the **Enter (Return)** key, or double click one Label to display the Map Edit Screen shown in Fig. 19.

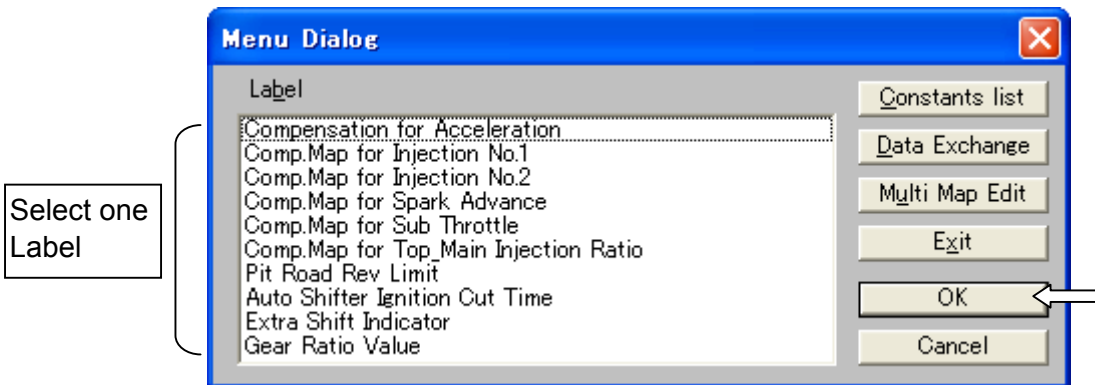


Fig. 19 Menu Dialog

In the Map Edit Screen, the Map to be edited will be displayed as the two-dimensional graph (GRAPH) and the table (TABLE).

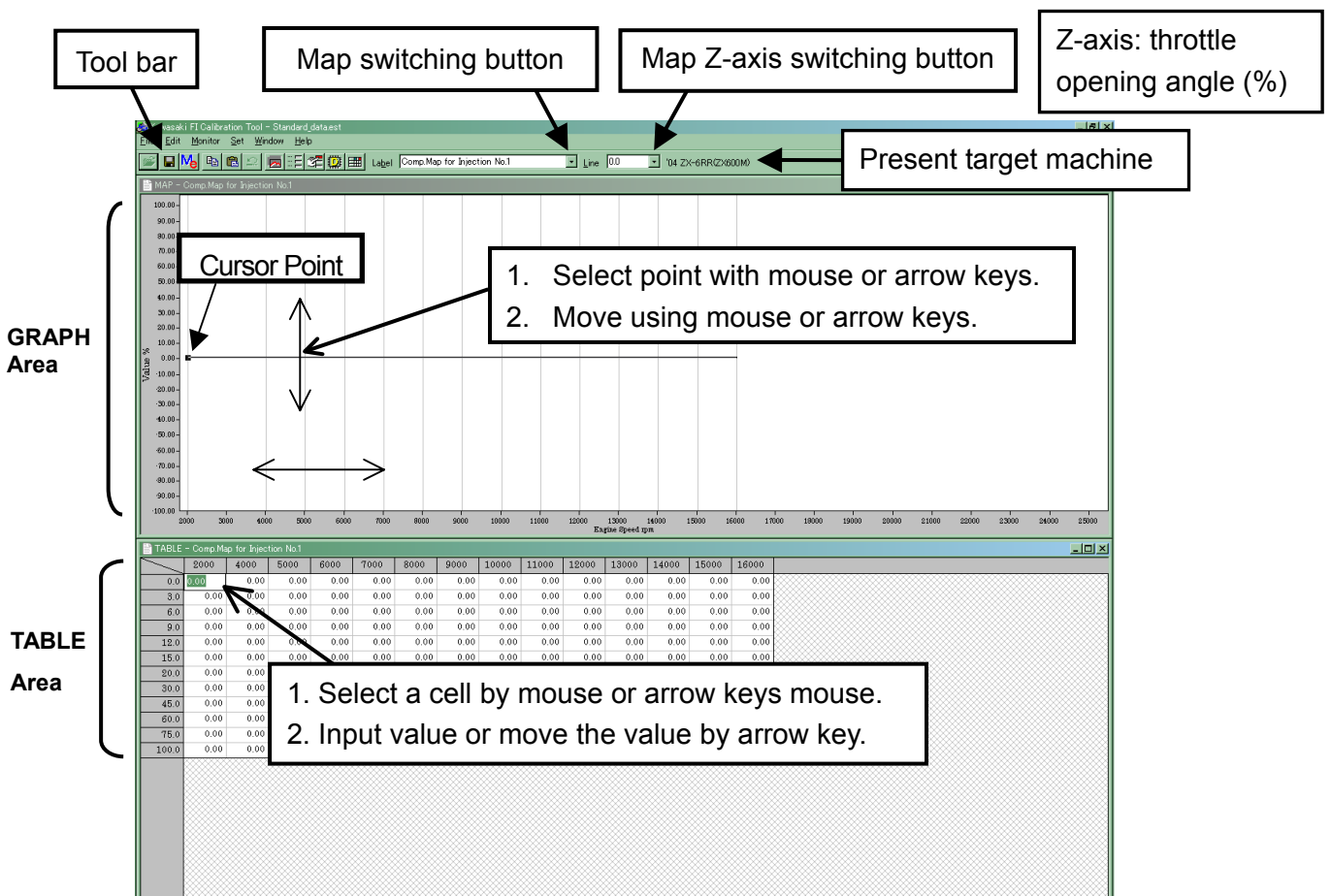


Fig. 20 Map Edit Screen (Compensation Map for Injection No.1 is shown as a sample.)

NOTE

- If you closed the GRAPH or TABLE, open the Menu dialog on the Menu button of the Tool bar and select the subject Map.
- If you switched the subject Map using Map switching button, only the display switches. When editing the subject Map, switch the Map by selecting the editing point of the Graph or Table area of the subject Map.

Data Edit can be carried out either in the **GRAPH** or **TABLE** area and the editing method for each area is as follows:

[Editing method on the GRAPH area]

Click a point on the graph to select the graph and the editing point of the engine rpm that is the nearest position to the clicked point.

Drag & drop of the graph data: Press down the left button of the mouse to select the editing point. After that, move the editing point up or down. Then, the data will be changed to the possible setting value nearest to the release point.

(The direction of the engine rpm cannot be changed.)

Key allocation when a point on the line is selected

→ (or **{Shift} + →**): Switches the selected point to the right-side rpm

← (or **{Shift} + ←**): Switches the selected point to the left-side rpm

↑ (or **{Page Up}**): Increases the graph data by an LSB* at the selected point

↓ (or **{Page Down}**): Decreases the graph data by an LSB* at the selected point

{Shift} + ↑ (or {f·2}):

Switches the selected graph area (line number) to another (Active row is moved down in the TABLE)

{Shift} + ↓ (or {f·3}):

Switches the selected graph area (line number) to another (Active row is moved up in the TABLE)

*LSB: Least Significant Bit

[Editing on the TABLE area]

Each value on the table can be directly edited by selecting the cell with mouse and putting value by key strokes. The values in the data are always changed to the nearest values that are possible to set. The values in the CPU are managed in hexadecimal data.

Key allocation when a cell in the table is selected

{Shift} + →: Switches the selected cell to the right-side rpm

{Shift} + ←: Switches the selected cell to the left-side rpm

{Shift} + ↑: Switches the selected cell to the upper-side cell

{Shift} + ↓: Switches the selected cell to the lower-side cell

{Page Up}: Increases the selected point by an LSB*

{Page Down}: Decreases the selected point by an LSB*

{Ctrl} + {Shift} + arrow: Switches the selected cells to the arrow direction

{Enter}: Defines data

*LSB: Least Significant Bit.

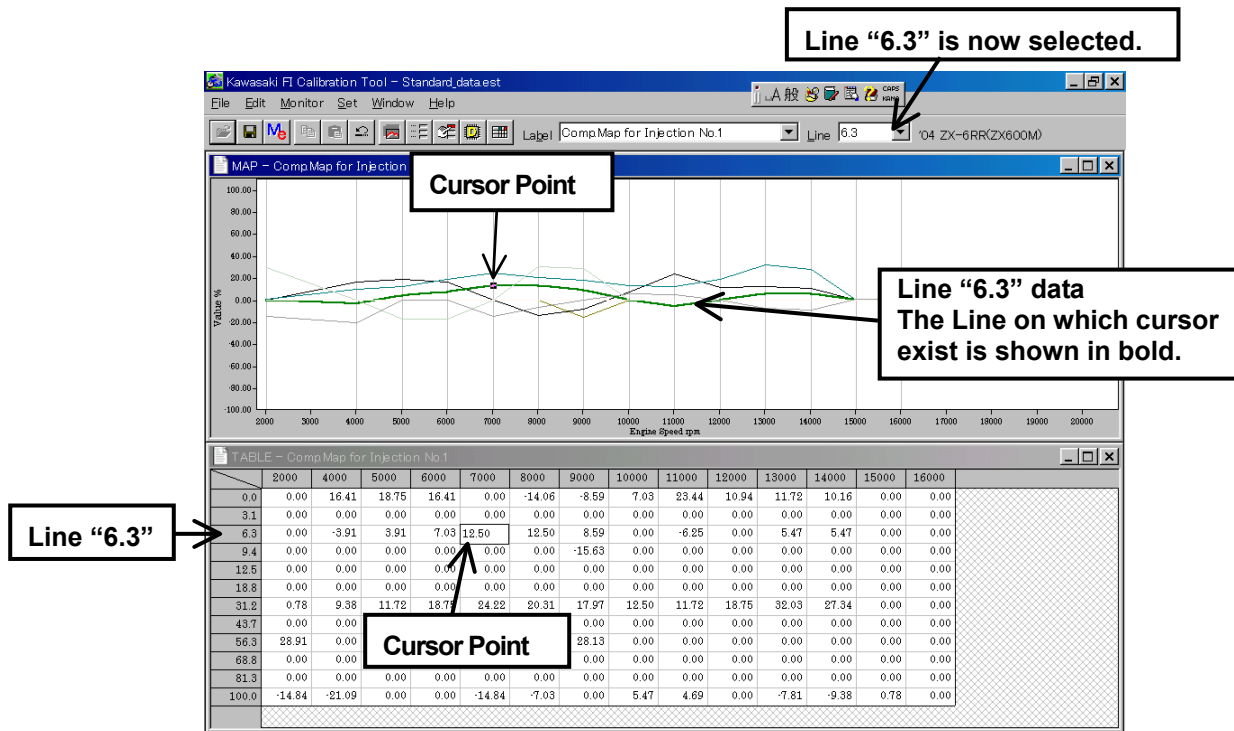


Fig. 21 Map Edit Screen (Compensation Map for Injection No.1 is shown as a sample.)

The available setting value is restricted within the following ranges.
(In case of ZXT00E)

“Compensation for Accelertion”: from -30 % to +30 %

“Comp.Map for Injection No.1”: from -30 % to +30 % (For the #1 and #4 cylinders)

“Comp.Map for Injection No.2”: from -30 % to +30 % (For the #2 and #3 cylinders)

“Comp.Map for Spark Advance”: from -15° CA* to +5° CA*

“Comp.Map for Sub Throttle”: from -50% to +50%

“Comp.Map for Top_Main Injection Rate”: from -20 % to +20 %

“Pit Road Rev Limit”: from 0 to 5000 rpm, when pit road limit SW is ON.

“Auto Shifter Ignition Cut Time”: from 0 to 150 ms, when auto shifter control is operated.

“Extra Shift Indicator”:

adjust the shift indicator lighting RPM within 10,000 and 15,000 rpm.

This function is operated when the optional meter is equipped.

“Gear Ratio Value”:

set each gear ratio (only when the kit transmission is equipped.)

See appendix 5.1.4 for each gear ratio.

*CA: crankshaft rotating angle.

If a value out of the range is entered on the graph or table, the error message shown in Fig. 22 will appear and the available maximum or minimum value will be set.

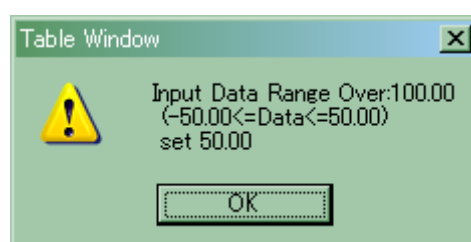


Fig. 22 Error Message

3.2.2 Map Axis Edit

In the TABLE area the axis data (Engine Revolution and Throttle Opening) can be edited by keying in the data directly after selecting the cell by mouse or keystrokes. The data is always exchanged to the nearest available setting value.

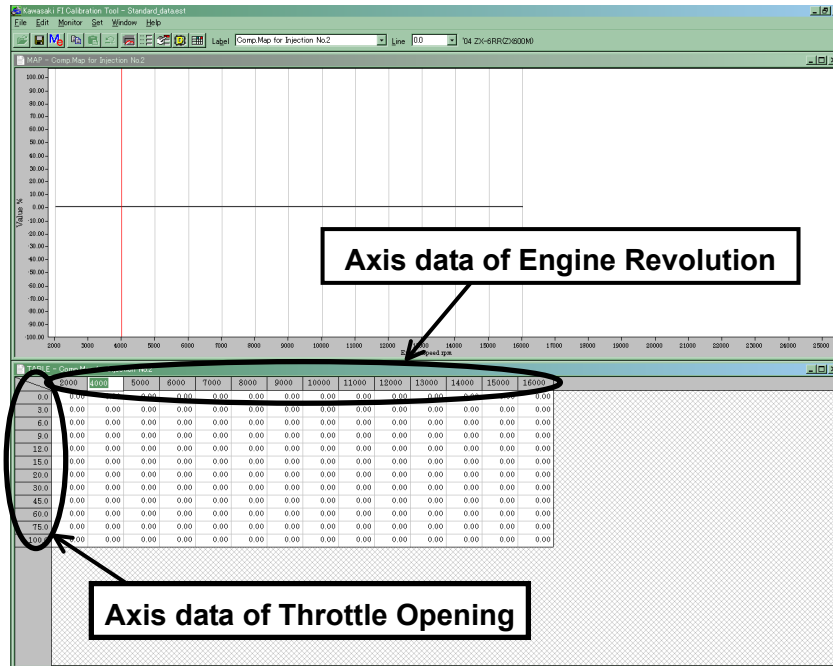


Fig. 23 Map Axis Editing (Original Axis Data)

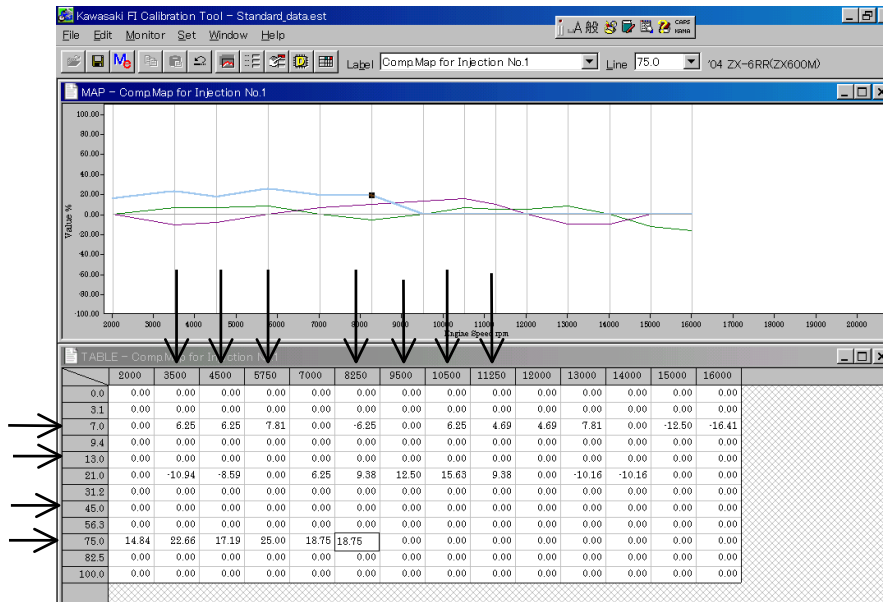


Fig. 24 Map Axis Editing (Sample Screen After Changing the Axis Data)

NOTE

- The data of engine revolution must be set in a value always larger than the left neighbor value and smaller than the right neighbor. If a value out of the available range is input, the data will be rounded within the available range.
- The data of throttle opening must be set in a value always larger than the upper neighbor value and smaller than the lower neighbor. If a value out of the available range is input, the data will be rounded within the available range.

If a value out of the available range is input to both ends of the axis data, the error message will appear and the maximum or minimum available setting value will be set.

CAUTION

- The axis data is applied to the all map simultaneously. Be caution that the changed axis data is applied to other maps.
- You cannot change the axis data at the “**Compensation for Acceleration**” screen.
- When you move from an Axis Data cell of Throttle Opening to a cell of adjusting data by key operation, the cell of the adjusting data line before editing the Axis Data will be selected.

3.2.3 Multi Map Edit

The Multi Map Edit can be used for the “**Comp. Map for Injection No.1 and No.2**” and map edit for all cylinders can be carried out at the same time.

Click the **Multi Map Edit** button in the Menu dialog

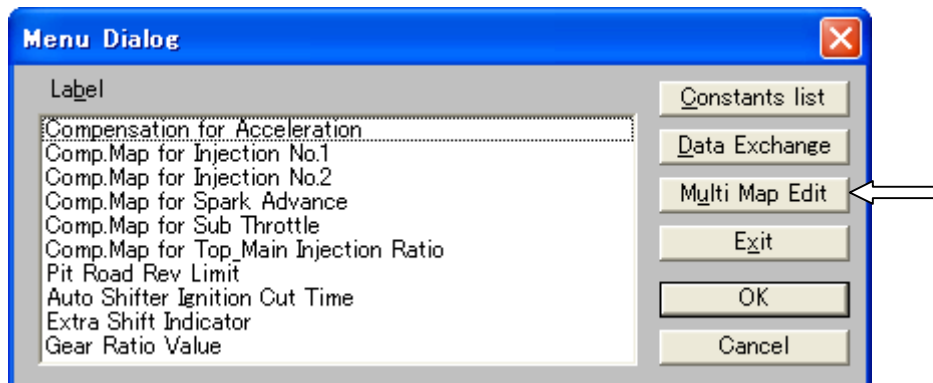


Fig. 25 Menu Dialog Screen (in Case of ZXT00E)

Then the Multi Map Edit dialog shown in Fig. 26 appears.

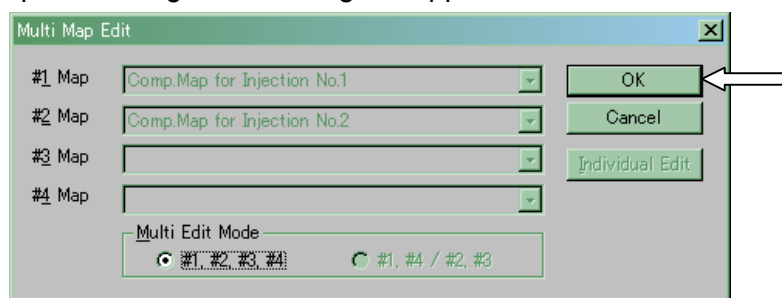


Fig. 26 Multi Map Edit dialog

Click the **OK** button to display the Multi Map Edit screen. The method of Multi Map Edit is the same as written above.

Quit the Multi Map Editing Mode

Click the **Individual Edit** button in the Multi Map Edit dialog to quit the Multi Map editing mode and display the Map Edit screen set for the #1 Map.

Or, click a Map menu other than the Multi Map in the Menu dialog to display the Map Edit screen for the selected Map.

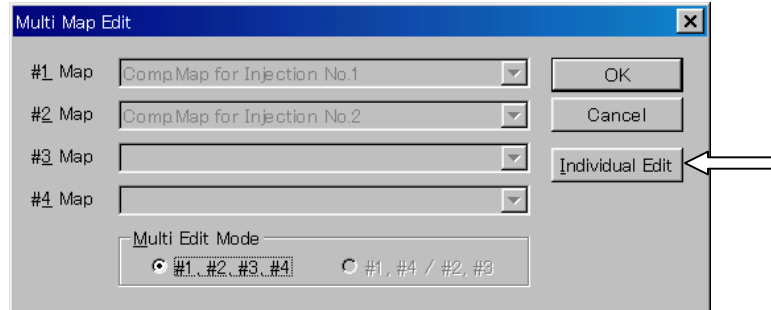


Fig. 27 Multi Map Edit dialog

CAUTION

Never edit the Multi Map setting by selecting the axis data in the Table editing area, or the axis data could be broken and the program could close.

NOTE

- When selecting Multi Map editing mode, #2 Map data is overwritten with the #1 Map data.
- When both the Map area and Data area are closed in the Multi Map editing, the Multi Map edit mode is automatically quit.

3.2.4 Individual Value Edit

In this Mode you can edit the values.

Click the **Constants list** button on the Menu Dialog to display the Setting Values Edit screen.

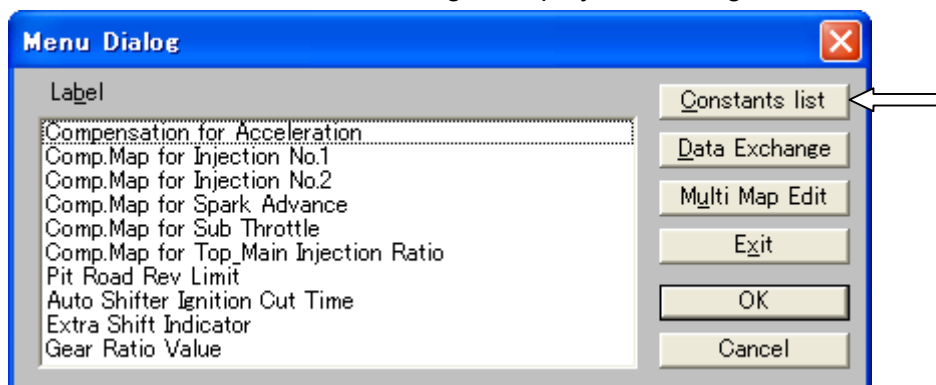


Fig. 28 Menu Dialog Screen

Then Fig. 29 appears.

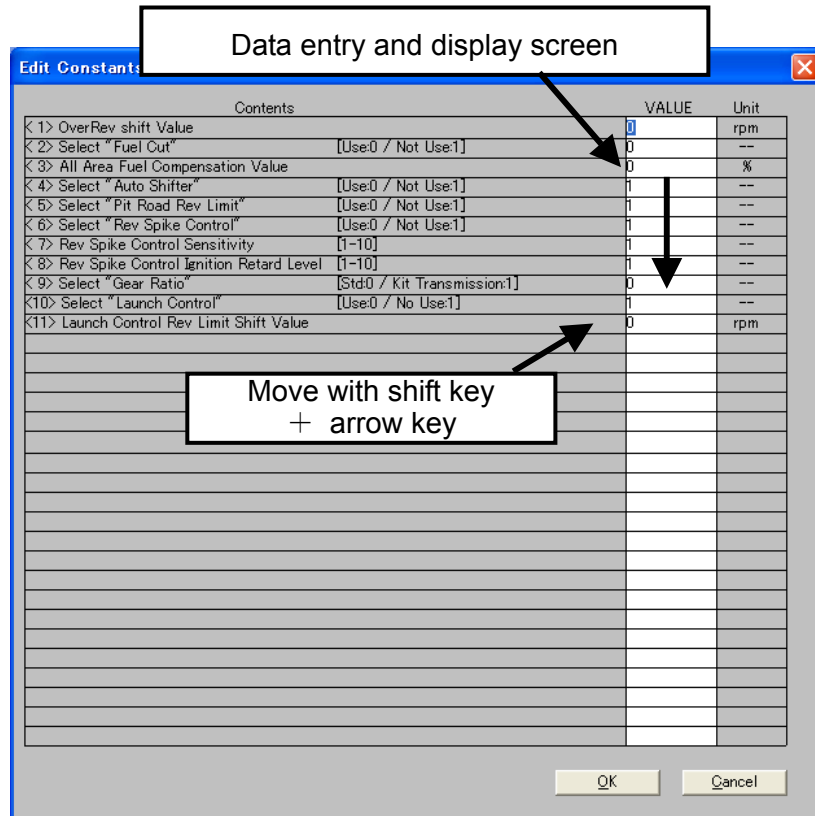


Fig. 29 Edit Constants List Screen (in case of ZXT00E)

<Setting Items: in case of ZXT00E>

The editable items in the Constants List are as follows:

All Area Fuel Compensation Value:

can be set in the range from -30 % to + 30 % (applied to all cylinders)

Over Rev shift Value:

set the off-set value from the standard Over Rev Limiter, can be set in the range from -1,000 rpm to +1000 rpm

Select "Fuel Cut": set the Yes or Not of Fuel Cut at decreasing the speed

Select "Auto Shifter": set the Yes or Not of Auto Shifter control

Select "Pit Road Rev Limit": set the Yes or Not of Pit Road RPM control

Select "Rev Spike Control": set the Yes or Not of Rev Spike control

Rev Spike Control Sensitivity: set the sensitivity of Rev Spike control

Rev Spike Control Retard Level: set the retard level of Rev Spike control

Select "Gear Ratio":

set the Yes or Not of Kit Transmission (Be sure to set when you use the Kit Transmission.)

Select "Launch Control": set the Yes or Not of Launch control

Launch Control Rev Limit Shift Value:

set the off-set value from the standard Launch Control Rev Limiter, can be set in the range from -2,000 rpm to +3,000 rpm

Key allocation when a cell in the table is selected

{Shift} + ↑: Switches the selected cell to the upper-side cell

{Shift} + ↓: Switches the selected cell to the lower-side cell

{Page Up}: Increases the selected point by an LSB

{Page Down}: Decreases the selected point by an LSB

{Enter}: Defines the data

NOTE

- The total Fuel Compensation Value is limited within -30% to +30% range of the original setting for fuel injection quantity. If the total value of [All Area Fuel Compensation Value] multiplies [Compensation for Acceleration] or [Comp. Map for Injection No.1(No.2)] exceeds the limit, the total Fuel Compensation Value is set to -30% or +30%.

[Example] Comp. Map for Injection No.1 (or No. 2): 20% up
 All Area Fuel Compensation Value: 30% up
 $1.20 \times 1.30 = 1.56$, $1.56 > 1.30$
 So, Total Compensation Value is 30 % up
 Total Compensation Value is not 56 % up

- When the Fuel Compensation Value is 0 %, the injected fuel quantity is controlled by the Base Map. And the Base Map is calculated by water temperature, air temperature, intake air pressure, throttle position, altitude pressure, and etc.
- The intermediate values of the Map are calculated linearly.

CAUTION

- When changing the Map, change the values gradually by checking the engine condition or measuring the Air/Fuel ratio.
- Always select “**Fuel Cut**”=0 and “**Pit Road Rev Limit**”=1(not use) when your motorcycle is equipped with catalyzer. If you failed, the muffler could burn out and break down.
- When removing the exhaust valve actuator, set the “**Select Exhaust Valve**” =1(Full Open Fixed)
- Always select “**Gear Ratio**” =1 when your motorcycle is equipped with the Kit Transmission. Input the appropriate gear ratio value (see appendix 5.1.4 (3) for the gear ratio value).
- The Sidestand Switch function does not operate. Be caution at running when equipping the sidestand.

3.3 Changing ECU Data

The data flow between ECU and PC is shown in Fig. 32.

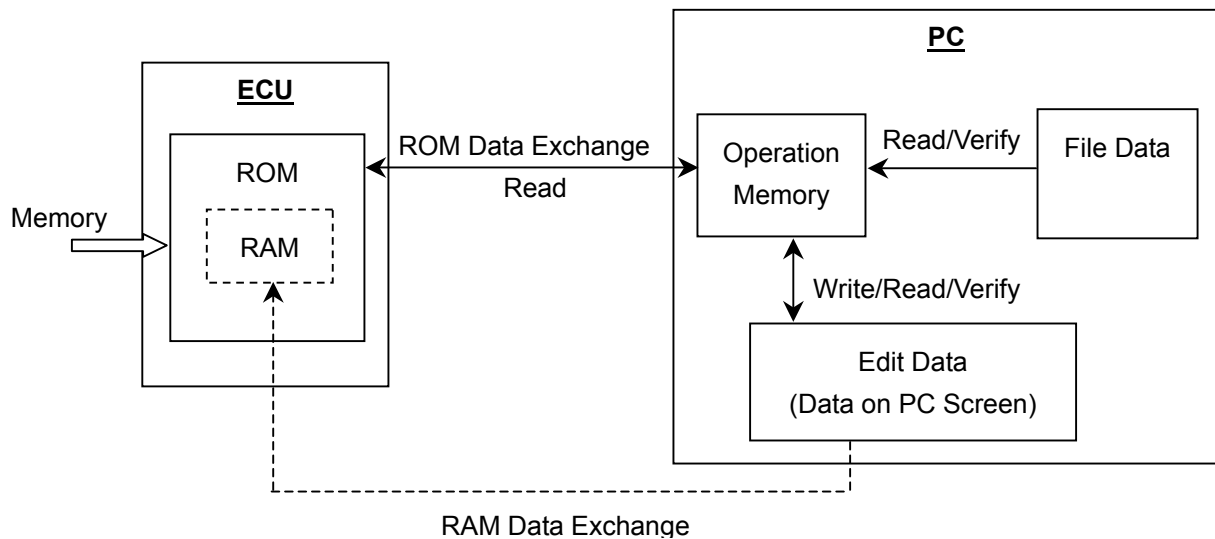


Fig. 32 The Data Flow between ECU and PC

The racing ECU has two kinds of ECU data exchange methods.

(1) ROM data exchange:

All data can be exchanged collectively and it takes about one minutes depending on PC performance.

For exchanging ROM data, even if the ignition switch turns off, the data will not be erased.

But the data cannot be exchanged when the engine is running. (Use ROM data exchange for normal circuit riding.)

(2) RAM data exchange:

The data can be exchanged instantaneously with the limitation of exchanging items. Exchanging data is possible while the engine running, however the data is erased when the ignition switch turns off. (Use RAM data exchange for a temporary setting adjustment in chassis-dynamo and the like.)

Operation method of ROM data exchange

Click the **Data Exchange** button in the Menu dialog

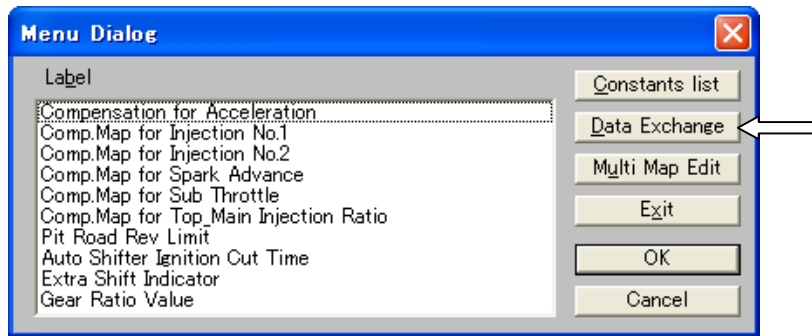


Fig. 33 Menu Dialog

Data Exchange screen is displayed as shown in Fig. 34.

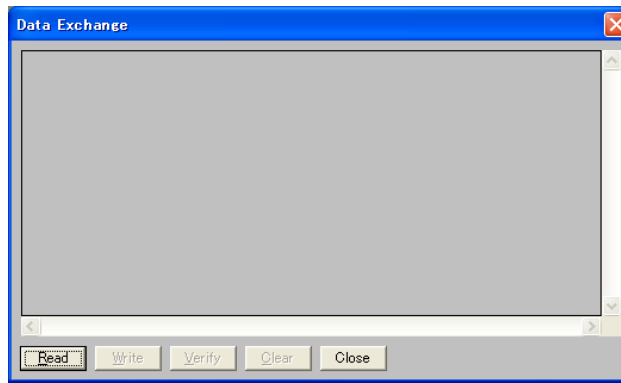


Fig.34 Data Exchange

In case of ROM data exchange, the data on the PC screen cannot be written directly to ECU. It is necessary to transfer the data temporarily to the operation memory in the PC (see Fig. 32).

The buttons “Read”, “Write” and “Verify” on the screen are operated mainly in the operation memory. The operation content is displayed on the screen by pressing each button.

Then the Data Exchange screen shown in Fig. 35 appears.

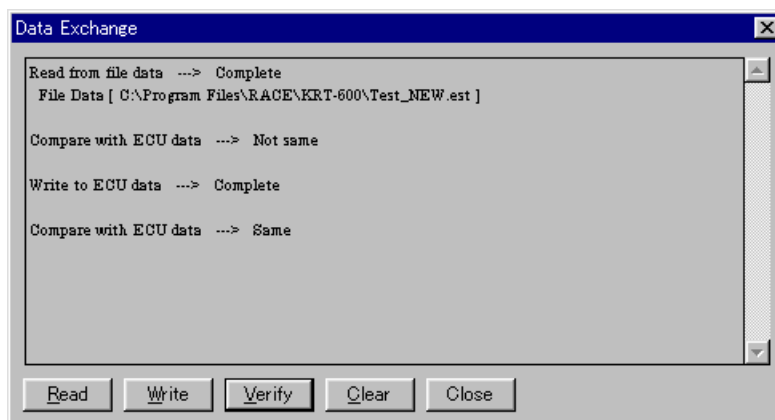


Fig. 35 Data Exchange Screen

The use and operation for each button is as follows:

[Read]

Click this button to read the data into the PC memory. (In case of no data in PC memory, **Read** is a must.)

You can read data from the following three data sources:

Read from ...

- ECU Data: read the ECU data into the PC memory (when Monitor is in the Start condition, the display is grayed out.)
- Edit Data: read the editing data into the PC memory
- File Data: read the (*.EST) data into the PC memory

[Write]

Click this button to write the read data of PC operation memory into the ECU or editing area. There are two addresses to write.

Write to ...

- ECU: write the data into ECU (when Monitor is in the Start condition, the display is grayed out.)
- Edit: write the data into the editing area as editing data

[Verify]

Click this button to select the data to be compared with the read data.

Compare with ...

- ECU Data: compare with ECU data (when Monitor is in the Start condition, the display is grayed out.)
- Edit Data: compare with edit data
- File Data : compare with data in a data file (*.est)

When the read data is same as the selected data, **Same** appears on the status indication area, and when they are different, **Not same** appears.

[Clear]

Click this button to clear the data exchange area on the PC.

[Close]

Click this button to finish the data change (clear the operating memory) and close the Data Exchange screen.

NOTE

- *In case of writing the editing data into the ECU, **Read** the editing data into the operation range. Then **Write** the data in the operation range into the ECU.*
- *After writing the data into the ECU, confirm the data to be written in is the same with the data in the ECU by using the **Verify** function. The data may be written into the ECU incorrectly according to the communication conditions.*
- *The usable number of writing into the ECU is 65,500 times. If it exceeds the limited number, error message of **NOT Writing** will appear. At that time replace with a new one.*
- *Be caution, if you select **Edit**, the present editing data can be lost.*
- *Write the data into ECU after confirming that the Ignition is turned on and the fuel pump and sub throttle valve are stopping.*

CAUTION
When operating the data into the ECU, wait until the fuel pump and the sub throttle valve stops. Then execute next operation or turn off the ignition switch.

Operation method of RAM data exchange

The map and the edited content of each setting value in the RAM can be written to ECU unit when the engine is running.

[Edited data exchange when the engine is running]

After the data edit, the selected data by Shift + Enter will be sent to the ECU unit.

NOTE

- *The data is sent to the ECU unit by 1 point (1 cell). If you select some cells, the data of the selected cells are sent to the ECU unit.*
- *The sent data is valid when the engine is running.
(The data is not memorized in the ECU unit.)
Be sure to save the edited data.*
- *The map axis data cannot be changed. Change the map axis data in ROM.*

3.4 Other Functions

3.4.1 Monitoring Function

In this mode, the data inside the ECU can be displayed during engine operation.

Go to the pull down **Monitor** menu and select **Monitor** or click **Monitor icon** on the toolbar. The Monitor dialog shown in Fig. 36 appears.

(This window can be resident)

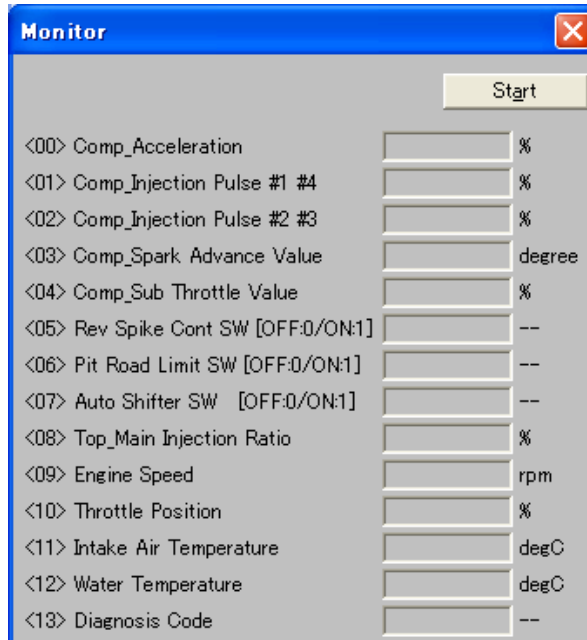


Fig. 36 Monitor Dialog (in case of ZXT00E)

Start : Click this button to start displaying. When display starts, the button name will change to **Stop**.

Stop : When this button is clicked during exchange process, the exchange process finishes and this button name will change to **Start**.

Pressing **Enter (Return)** key can change the screen from Monitor dialog screen to Main Window. To set the data inside the ECU, which can be monitored from the Monitor dialog, go to the pull down **Monitor** menu and select **Item set**, or click **Set Item** icon on the toolbar. After the dialog shown in Fig. 37 appears, select the item that you want to set.

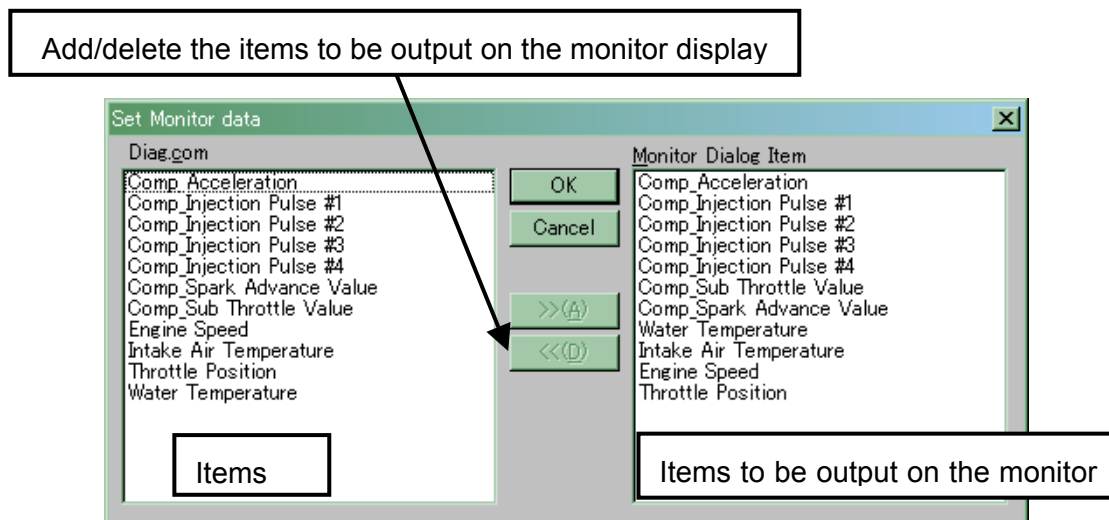


Fig. 37 Item Setting Dialog

Setting Monitor dialog items

>>[A]: Add items selected from the list to the Monitor Dialog Item area

<<[D]: Delete items from the Monitor Dialog Item area

Details of monitoring items are as follows (in case of ZXT00E):

Comp_Acceleration :

ECU calculating result in the running condition at monitoring based on the setting value of Compensation for Acceleration

Comp_Injection Pulse #1, #4:

ECU calculating result in the running condition at monitoring based on the setting value of Comp. Map for Injection No.1 (#1/#4: No.1/No.4 Cylinder)

Comp_Injection Pulse #2, #3:

ECU calculating result in the running condition at monitoring based on the setting value of Comp. Map for Injection No.2 (#2/#3: No.2/No.3 Cylinder)

Comp_Spark Advance Value:

ECU calculating result in the running condition at monitoring based on the setting value of Comp. Map for Spark Advance

Comp_Sub Throttle Value:

ECU calculating result in the running condition at monitoring based on the setting value of Comp. Map for Sub Throttle

Top_Main Injection Ratio :

ECU calculating result in the running condition at monitoring based on the setting value of Comp. Map for Top_Main Injection Ratio

Engine Speed: Engine Speed at monitoring

Intake Air Temperature: Intake Air Temperature at monitoring

Throttle Position: Throttle Opening at monitoring

Water Temperature: Water Temperature at monitoring

Pit Road SW[OFF : 0/ON:1]:

Condition of Pit Road RPM Limit SW at monitoring

When “Select Pit Road Rev Limit” is set 0 (Used), you can monitor

Shifter SW[OFF : 0/ON:1]:

Condition of Shifter SW at monitoring

When “Select Auto Shifter” is set 0 (Used), you can monitor

Rev Spike Cont.SW[OFF : 0/ON:1]:

Condition of Rev Spike Control SW at monitoring

When “Select Rev Spike Control” is set 0 (Used), you can monitor

Diagnosis Code:

Diagnosis Code on sensors at monitoring

Refer to the Service Manual for Diagnosis Code information

3.4.2 Title Editor (Memo)

You can record the title (memo) for each edit data.

Go to the pull-down **Set** menu to select **Title**. The Title Editor dialog shown in Fig. 38 appears.

You can set the mode with the mouse and directly edit the data with keystroke.

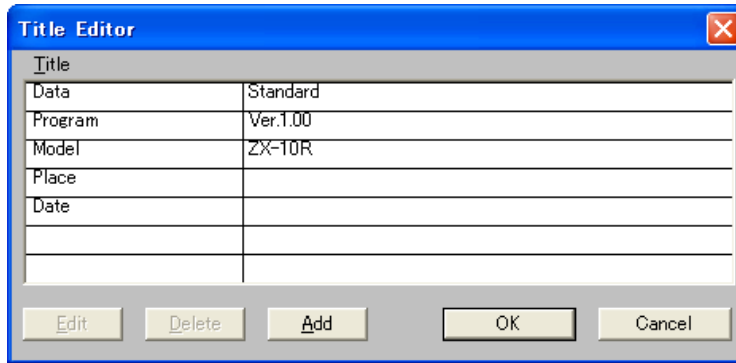


Fig. 38 Title Editor Dialog

3.4.3 Default Folder Setting Function

In this mode, you can set the default folder when **File Open** is carried out.

Go to the pull down **Set** menu to select **Directory**. The Directory dialog shown in Fig. 39 appears.

Directly enter the folder name by keystroke or use the Browsing function in the folder search dialog to select the folder from the existing folders.

Use the full path name to write in the File Path.

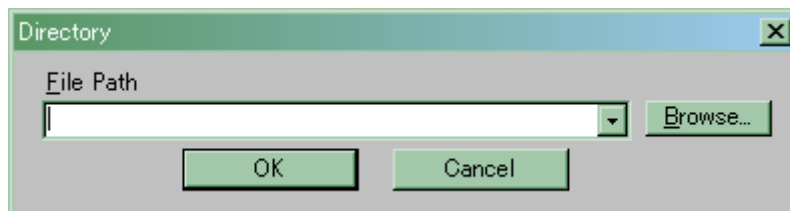


Fig. 39 Directory Dialog

3.5 File Saving

You can save the data.

After editing the Map, click **File** and next click **Save** button.

Put the name in the column and then click the **Save** button.

NOTE

- The file extension is **.est**. When saving the extension is attached automatically.
- If you change the extension, you cannot open the file.
- When saving the data you can record the title (memo). Refer the 3.4.3 section.

3.6 Changing the Target Machine

You can change the editing data according to the target machine. To change the target machine, go to the pull down **Set** menu and select **Machine Select**. Then the Machine Select dialog shown in Fig. 40 appears.

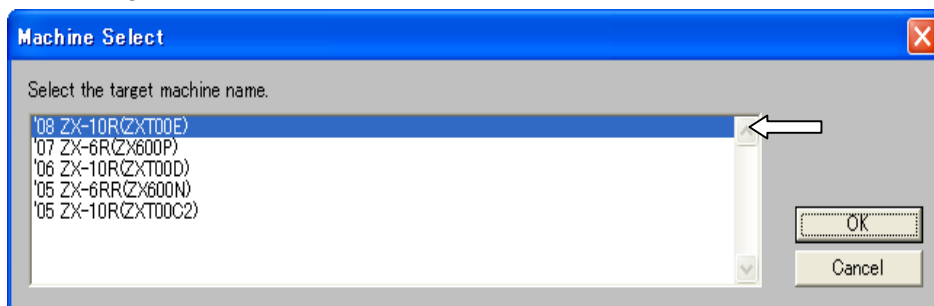


Fig. 40 Machine Select Dialog

After you select the machine that you want to set by mouse operation or key operation, click **OK** button or press **Enter (Return)** key. Then the machine change confirming dialog shown Fig. 41 appears.

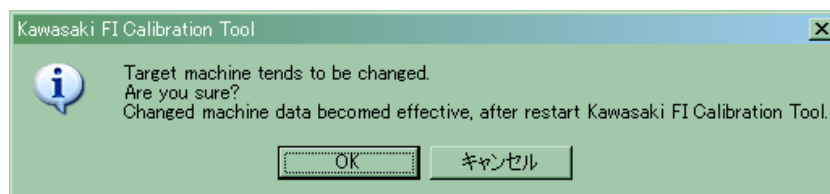


Fig. 41 Machine Change Confirming dialog

Clicking **OK** button or pressing **Enter (Return)** key can change the target machine from next starting.

NOTE

- Selecting **Cancel** button in the Fig. 40 or Fig. 41 cannot execute the machine changing.

3.7 New Usable Functions

3.7.1 Plural Cells Data Selecting

You can select the plural cells. This is useful when copying the data to excel file or changing the data simultaneously. (See Fig. 42).

Select the start point [Click (Left button)], and select the end point [{Shift} + Click (Left button)] or [{Shift} + {Ctrl} + arrow key]

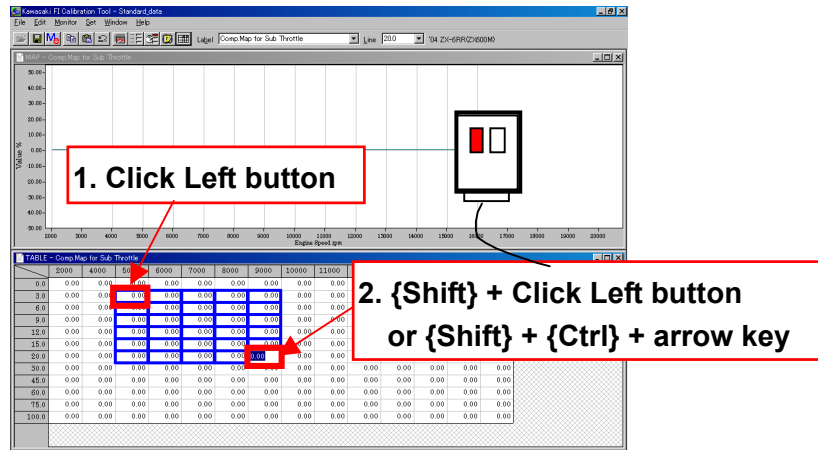


Fig. 42 Data Selecting Method

3.7.2 Plural Cells Data Copying

You can copy the selected data to Microsoft® Excel file by using Microsoft® Windows clipboard.

Copy: {Ctrl} + {C} or [Pull down menu] → [Edit] → [Copy]

Paste: {Ctrl} + {V} or [Pull down menu] → [Edit] → [Paste]

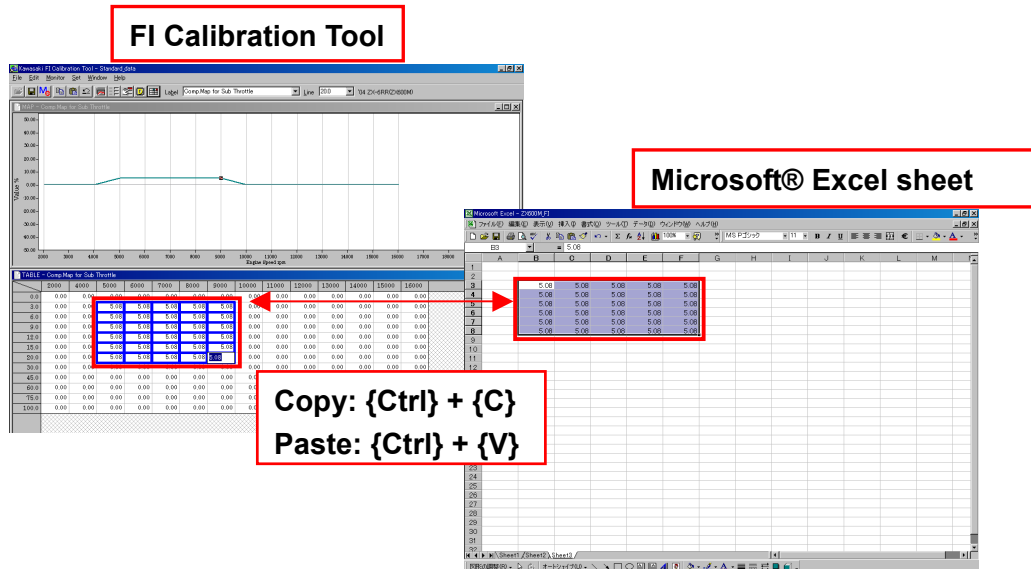


Fig. 43 Data Copying Method

4. Menu List

4.1 Pull down Menu

4.1.1 File

Open	Ctrl + O	Loads data file
Close		Closes the loaded file
Save		Names the file and saves it
Menu	F1	Displays the Menu dialog
Exit	Alt + F4	Finishes FI_Tool

4.1.2 Edit

Undo	Ctrl + Z	Cancels the data edit
Copy	Ctrl + C	Temporarily saves the data in cell(s) into clipboard
Paste	Ctrl + V	Paste the data in the clipboard
Multi Map Edit		Displays the Multi Map Edit setting dialog
Individual Edit		Finishes the Multi Map Edit

4.1.3 Monitor

Monitor	Displays the Monitor dialog
Start	Starts the Monitor Exchange
Stop	Finishes the Monitor Exchange
Item set	Displays the Monitor Item Setting Dialog

4.1.4 Set

RS232C	Displays the RS232C setting dialog
Title	Displays the Title setting dialog
Constants list	Displays the Constants list setting dialog
Data Exchange	Displays the Data Exchange setting dialog
Directory	Displays the Directory setting dialog
Machine Select	Displays the Machine Select dialog

4.1.5 Window

Open	Opens Map or Table window
Cascade	Cascades two or more windows
Title	Titles two or more windows
All	Switches the graph mode on the Map screen between All and Single
Monitor Dialog	Moves the cursor to the Monitor dialog
MAP-*****	Displays the active windows list
TABLE-*****	Displays the active windows list

4.1.6 Help

Tool box	Displays the tool box dialog
About Kawasaki FI Calibration Tool	Displays the Version dialog

4.2 Tool Bar (Icon)

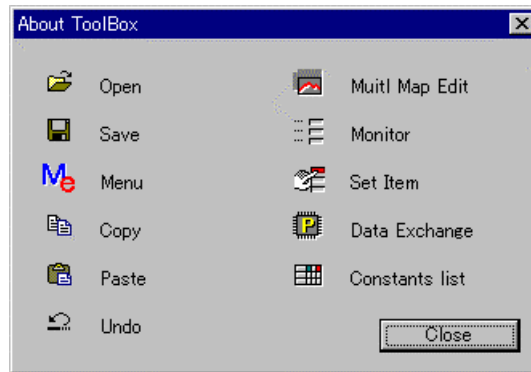


Fig. 45 Tool Box Dialog

Explanation from the left side

- Open the file (File - Open)
- Save the file (File - Save)
- Open the Menu dialog (File - Menu)
- Copy (Edit - Copy)
- Paste (Edit - Paste)
- Undo (Edit - Undo)
- Open the multi edit dialog (Edit - Multi Map Edit)
- Open the Monitor dialog (Monitor - Monitor)
- Open the Set Monitor Data dialog (Monitor - Item set)
- Open the Data Exchange dialog (Set - Data Exchange)
- Open the Constants list dialog (Set - Constants list)

5. Appendix

5.1 Connecting Method

5.1.1 '05 ZX-6RR

(1) With Optional Meter and Racing Main Harness

When installing the Racing Main Harness, refer the Race Kit Manual of ZX600-N1 (P/No. 99929-1868-01).

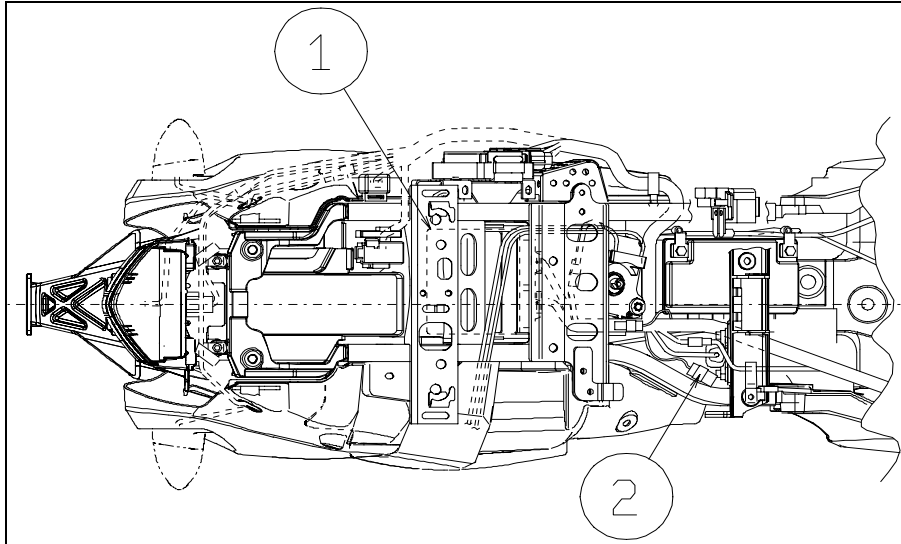


Fig. 46 Connecting Method

- (1) Replace the ECU with Racing ECU [1].
- (2) Replace the Standard Main Harness with Racing Main Harness.
- (3) Connect the connector of I/F Box to the connecting port [2] of ECU.

(2) With Original Meter and Standard Main Harness, Sub harness

- (1) Replace the ECU with Racing ECU.
- (2) Connect the Sub-harness connectors to the diagnosis line of Main Harness.
- (3) Insert the two leads of Sub-harness to the ECU connector as shown.

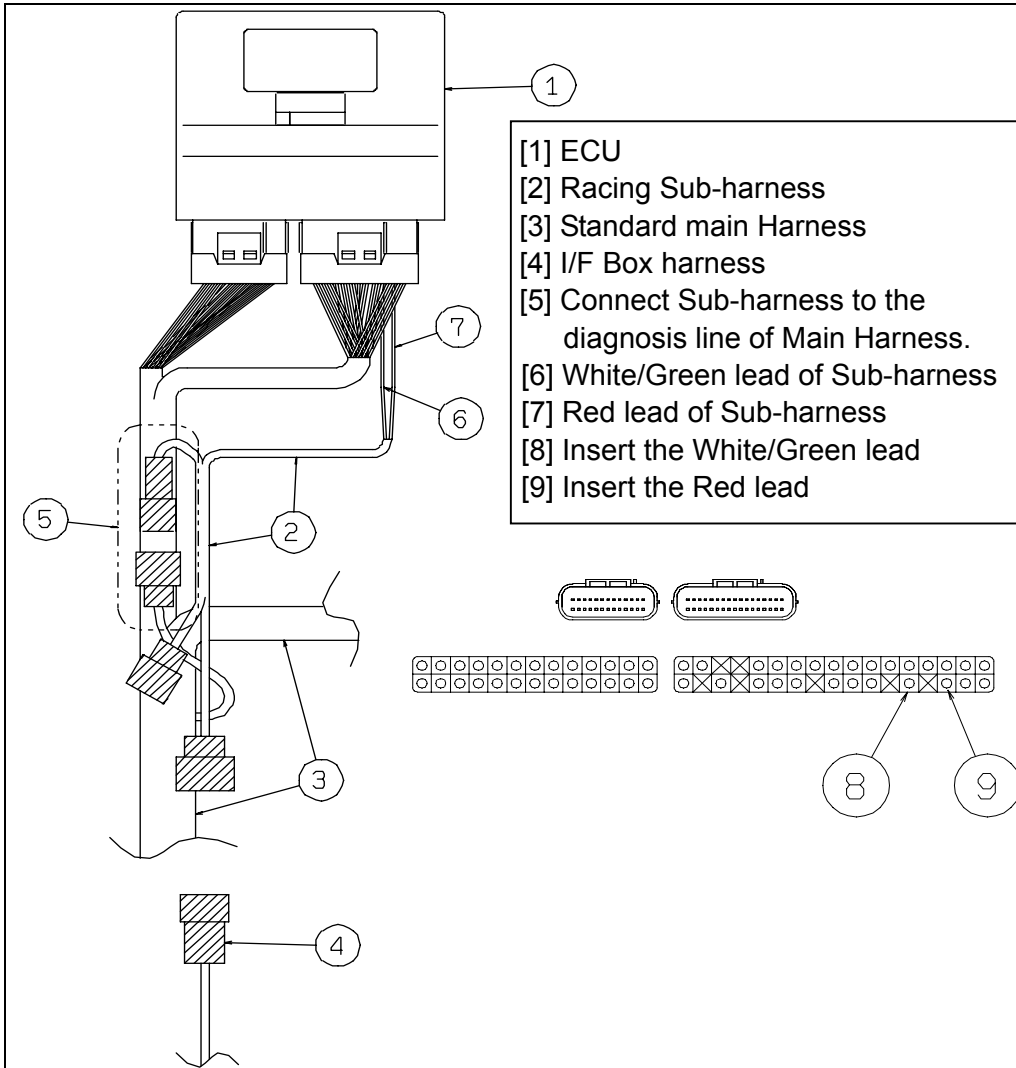


Fig. 47 Connecting Method

- (4) When inserting the leads, follow the method shown below, or the edge of the lead could damage the rubber seal inside connector.

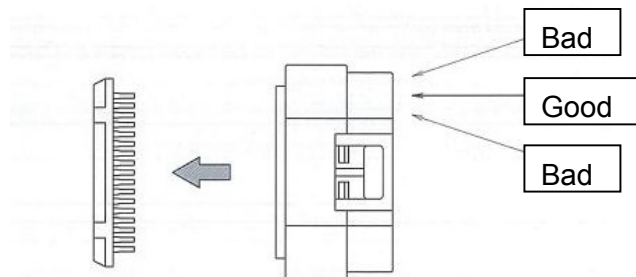


Fig. 48 Inserting Method of Leads

- When you insert these leads, remove the orange colored cover. Before attaching the cover, make sure that the leads are inserted correctly.

5.1.2 '06 ZX-10R

(1) With Racing Main Harness

Connecting method

- (1) Remove the Standard Main Harness and install the Racing Main Harness (P/No. 26031-0425, 0426).
- (2) Replace the standard ECU with Racing ECU (P/No. 21175-0096).
- (3) Connect the 6-pin connector of I/F Box to the 6-pin connector of Racing Main Harness.

(2) With Original Meter and Standard Main Harness

- (1) Replace the original ECU with Racing ECU.
- (2) Insert the Racing Sub-harness (P/No. 26031-0427) between the Racing ECU and the Standard Main Harness.
- (3) Connect the connector of I/F-Box to the connecting port of Racing Sub-harness.

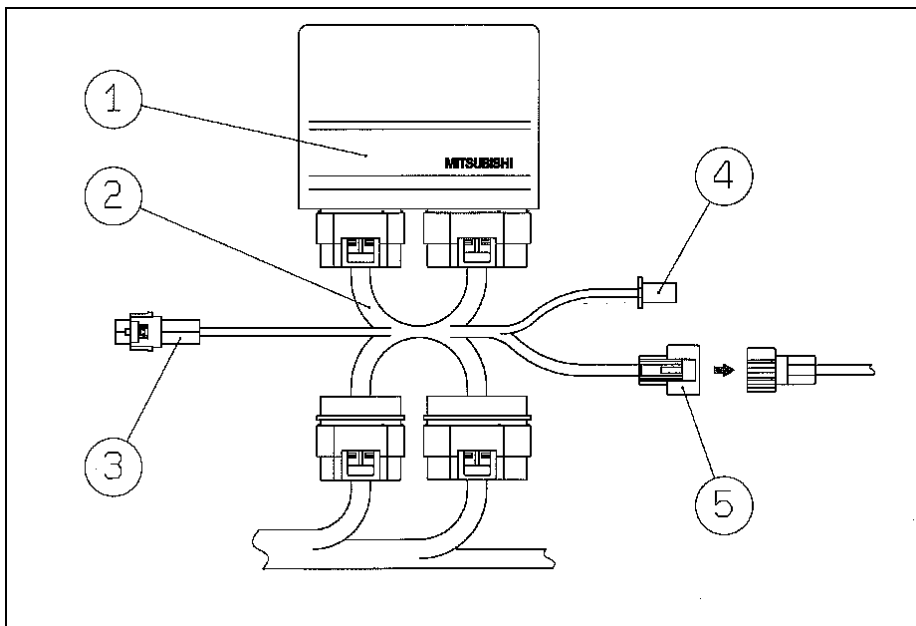


Fig. 49 Connecting Method

1. ECU
2. Racing Sub-harness (P/No. 26031-0427)
3. Connect to the auto shifter (blue).
4. Connect to the speed limit switch (black).
5. Connect to the I/F-Box (black).

(3) Kit Transmission

- Set Select “Gear Ratio” [Std: 0 / Kit Transmission :1] to “1” of the FI_Tool and input the “Gear Ratio Value” of the map value as shown in the following chart.
- If the 6th gear is changed except for A(STD), it is necessary to change the gear ratio value of all the 1st to 5th gear.

Select A for 6th gear

	A	B	C	D	E	F	G
1st	3.13 (15/38)	2.95 (13/31)	3.00 (14/34)	2.86 (16/37)	3.22 (15/39)		
2nd	2.54 (19/39)	2.41 (19/37)	2.61 (18/38)	2.48 (18/36)			
3rd	2.15 (19/33)	2.22 (19/34)	2.17 (16/28)	2.12 (21/36)			
4th	1.89 (21/32)	1.92 (20/31)	1.95 (21/33)				
5th	1.71 (21/29)	1.80 (20/29)	1.73 (20/28)	1.77 (21/30)			
6th	1.62 (23/30)						

Select B for 6th gear

	A	B	C	D	E	F	G
1st	3.24 (15/38)	3.05 (13/31)	3.11 (14/34)	2.96 (16/37)	3.33 (15/39)		
2nd	2.63 (19/39)	2.49 (19/37)	2.70 (18/38)	2.56 (18/36)			
3rd	2.22 (19/33)	2.29 (19/34)	2.24 (16/28)	2.20 (21/36)			
4th	1.95 (21/32)	1.99 (20/31)	2.01 (21/33)				
5th	1.77 (21/29)	1.86 (20/29)	1.79 (20/28)	1.83 (21/30)			
6th		1.77 (21/29)					

Select C for 6th gear

	A	B	C	D	E	F	G
1st	3.36 (15/38)	3.16 (13/31)	3.22 (14/34)	3.07 (16/37)	3.45 (15/39)		
2nd	2.72 (19/39)	2.58 (19/37)	2.80 (18/38)	2.65 (18/36)			
3rd	2.30 (19/33)	2.37 (19/34)	2.32 (16/28)	2.27 (21/36)			
4th	2.02 (21/32)	2.06 (20/31)	2.08 (21/33)				
5th	1.83 (21/29)	1.92 (20/29)	1.86 (20/28)	1.90 (21/30)			
6th			1.77 (21/28)				

Select D for 6th gear

	A	B	C	D	E	F	G
1st	3.36 (15/38)	3.16 (13/31)	3.22 (14/34)	3.07 (16/37)	3.45 (15/39)		
2nd	2.72 (19/39)	2.58 (19/37)	2.80 (18/38)	2.65 (18/36)			
3rd	2.30 (19/33)	2.37 (19/34)	2.32 (16/28)	2.27 (21/36)			
4th	2.02 (21/32)	2.06 (20/31)	2.08 (21/33)				
5th	1.83 (21/29)	1.92 (20/29)	1.86 (20/28)	1.90 (21/30)			
6th				1.69 (22/28)			

Select F for 6th gear

	A	B	C	D	E	F	G
1st	3.13 (15/38)	2.95 (13/31)	3.00 (14/34)	2.86 (16/37)	3.22 (15/39)		
2nd	2.54 (19/39)	2.41 (19/37)	2.61 (18/38)	2.48 (18/36)			
3rd	2.15 (19/33)	2.22 (19/34)	2.17 (16/28)	2.12 (21/36)			
4th	1.89 (21/32)	1.92 (20/31)	1.95 (21/33)				
5th	1.71 (21/29)	1.80 (20/29)	1.73 (20/28)	1.77 (21/30)			
6th						1.55 (24/30)	

Select G for 6th gear

	A	B	C	D	E	F	G
1st	3.24 (15/38)	3.05 (13/31)	3.11 (14/34)	2.96 (16/37)	3.33 (15/39)		
2nd	2.63 (19/39)	2.49 (19/37)	2.70 (18/38)	2.56 (18/36)			
3rd	2.22 (19/33)	2.29 (19/34)	2.24 (16/28)	2.20 (21/36)			
4th	1.95 (21/32)	1.99 (20/31)	2.01 (21/33)				
5th	1.77 (21/29)	1.86 (20/29)	1.79 (20/28)	1.83 (21/30)			
6th							1.69 (22/29)

Ex. : Select 1st to 6th gear as BADCAD combination.

Select each gear ratio from the chart “Select D for 6th gear”.

Select D for 6th gear

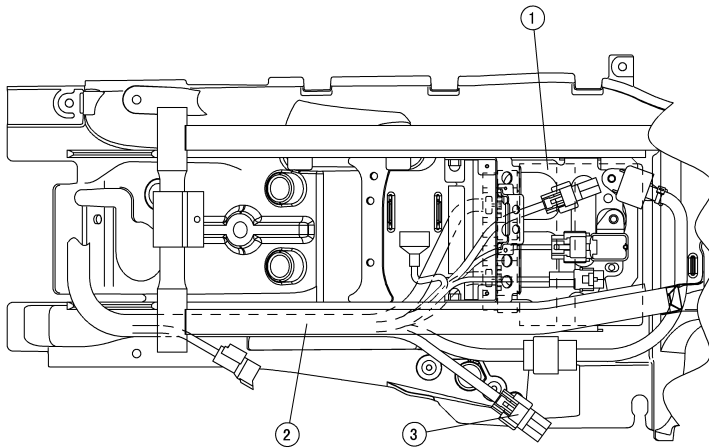
	A	B	C	D	E	F	G
1st	3.36 (15/38)	3.16 (13/31)	3.22 (14/34)	3.07 (16/37)	3.45 (15/39)		
2nd	2.72 (19/39)	2.58 (19/37)	2.80 (18/38)	2.65 (18/36)			
3rd	2.30 (19/33)	2.37 (19/34)	2.32 (16/28)	2.27 (21/36)			
4th	2.02 (21/32)	2.06 (20/31)	2.08 (21/33)				
5th	1.83 (21/29)	1.92 (20/29)	1.86 (20/28)	1.90 (21/30)			
6th				1.69 (22/28)			

Therefore, the input gear ratio values are as shown below.

1st	2nd	3rd	4th	5th	6th
3.16	2.72	2.27	2.08	1.83	1.69

5.1.3 '07 ZX-6R

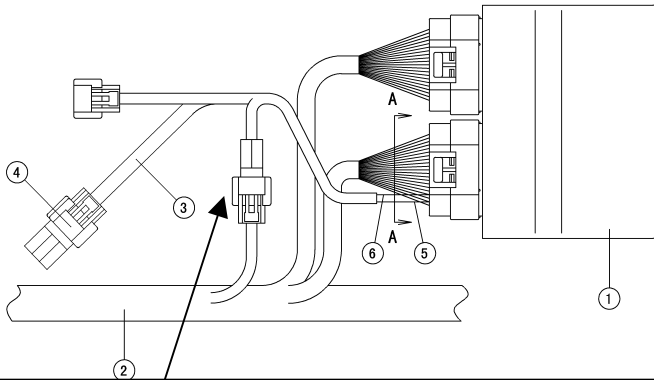
(1) With Racing Main Harness



1. Replace the ECU with Racing ECU.
2. Replace the Main Harness with Racing Main Harness.
3. Connect to the I/F Box

Fig.50 Connecting Method

(2) With Original Meter and Standard Main Harness



1. ECU
2. Standard Main Harness
3. Racing Sub-Harness
4. Connect to the I / F Box
5. Red lead of Sub-Harness
6. White / Green lead of Sub-Harness

Connect Sub-harness to the diagnosis line of Main Harness

Fig.51 Connecting Method

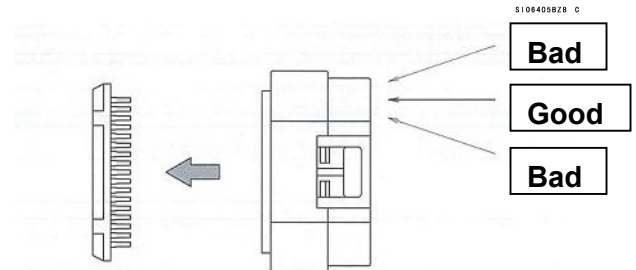
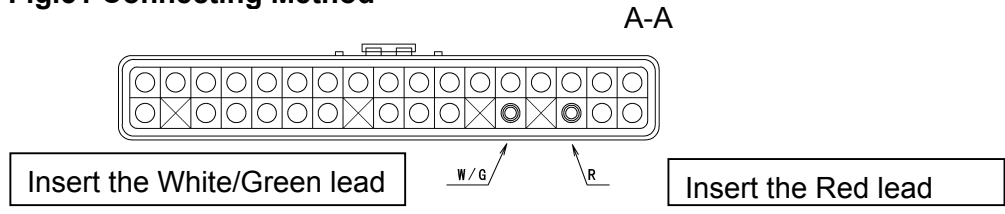


Fig. 52 Inserting Method of Leads

1. Replace the ECU with Racing ECU.
2. Connect the Sub-harness connectors to the diagnosis line of Main Harness.
3. Insert the two leads of Sub-harness to the ECU connector as shown.
4. When you insert these lead lines, remove the orange colored cover.
5. Before attaching the cover, make sure that the lead lines are inserted.

(3) Kit Transmission

- Set Select "Gear Ratio" [Std: 0 / Kit Transmission :1] to "1" of the FI_Tool and input the gear ratio values which are selected from the following the chart.

Ex. Select 1st to 6th gear as AAAAAA combination.

Select each gear ratio from the chart.

	A	B	C
1st	2.714 (14/38)	2.643 (14/37)	2.571 (14/36)
2nd	2.200 (14/33)	2.167 (18/39)	2.125 (16/34)
3rd	1.850 (20/37)		
4th	1.600 (20/32)	1.650 (20/33)	
5th	1.421 (19/27)	1.500 (20/30)	1.458 (24/35)
6th	1.300 (20/26)	1.391 (23/32)	1.346 (26/35)

Therefore, the input gear ratio values are as shown below.

1st	2nd	3rd	4th	5th	6th
2.714	2.200	1.850	1.600	1.421	1.300

Input the gear ratio values to the Constants List.

Select "Auto Shifter Direction" [Plus : 0 / Minus : 1]	0	--
Select "Extra Shift Lamp" [Use : 0 / Not Use : 1]	1	--
Select "Gear Ratio" [Std : 0 / Kit Transmission : 1]	0	--
_Gear Ratio "1st"	2.714	--
_Gear Ratio "2nd"	2.200	--
_Gear Ratio "3rd"	1.850	--
_Gear Ratio "4th"	1.600	--
_Gear Ratio "5th"	1.421	--
_Gear Ratio "6th"	1.300	--

(From Fig. 29 Constants List Screen)

5.1.4 '08 ZX-10R

(1) With Racing Main Harness

Connecting method

- (1) Remove the Standard Main Harness and install the Racing Main Harness (P/No. 26031-0698, 0699).
- (2) Replace the standard ECU with Racing ECU (P/No. 21175-0212).
- (3) Connect the 6-pin connector of I/F Box to the 6-pin connector of Racing Main Harness.

(2) With Original Meter and Standard Main Harness

- (1) Replace the original ECU with Racing ECU (P/No. 21175-0212).
- (2) Insert the Racing Sub-harness (P/No. 26031-0700) between the Racing ECU and the Standard Main Harness.
- (3) Connect the connector of I/F-Box to the connecting port of Racing Sub-harness.

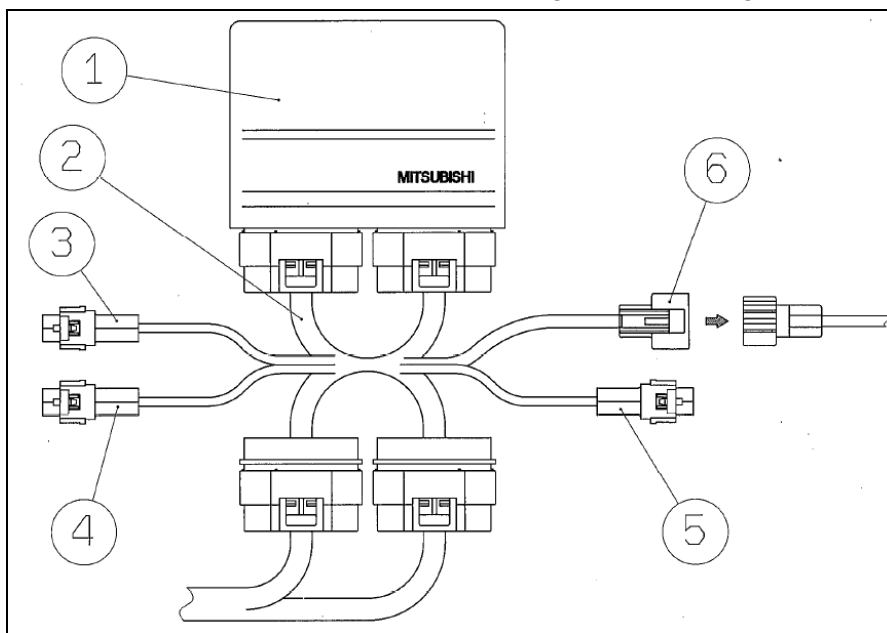


Fig. 53 Connecting Method

1. ECU
2. Racing Sub-harness (P/No. 26031-0700)
3. Connect to the auto shifter (blue).
4. Connect to the speed limit switch (black).
5. Connect to the Rev Spike Control (black).
6. Connect to the I/F-Box (black).

(3) Kit Transmission

- Set Select “Gear Ratio” [Std: 0 / Kit Transmission :1] to “1” of the FI_Tool and input the “Gear Ratio Value” of the map value as shown in the following chart.
- If the 6th gear is changed, it is necessary to change the gear ratio value of all the 1st to 5th gear.
- The standard transmission of '08 ZX-10R consists of 1st:E, 2nd:A, 3rd:A, 4th:B, 5th:C, 6th:A.

Select A for 6th gear

	A	B	C	D	E	F	G
1st	3.13 (15/38)	2.95 (13/31)	3.00 (14/34)	2.86 (16/37)	3.22 (15/39)		
2nd	2.54 (19/39)	2.41 (19/37)	2.61 (18/38)	2.48 (18/36)			
3rd	2.15 (19/33)	2.22 (19/34)	2.17 (16/28)	2.12 (21/36)			
4th	1.89 (21/32)	1.92 (20/31)	1.95 (21/33)				
5th	1.71 (21/29)	1.80 (20/29)	1.73 (20/28)	1.77 (21/30)			
6th	1.62 (23/30)						

Select B for 6th gear

	A	B	C	D	E	F	G
1st	3.24 (15/38)	3.05 (13/31)	3.11 (14/34)	2.96 (16/37)	3.33 (15/39)		
2nd	2.63 (19/39)	2.49 (19/37)	2.70 (18/38)	2.56 (18/36)			
3rd	2.22 (19/33)	2.29 (19/34)	2.24 (16/28)	2.20 (21/36)			
4th	1.95 (21/32)	1.99 (20/31)	2.01 (21/33)				
5th	1.77 (21/29)	1.86 (20/29)	1.79 (20/28)	1.83 (21/30)			
6th		1.77 (21/29)					

Select C for 6th gear

	A	B	C	D	E	F	G
1st	3.36 (15/38)	3.16 (13/31)	3.22 (14/34)	3.07 (16/37)	3.45 (15/39)		
2nd	2.72 (19/39)	2.58 (19/37)	2.80 (18/38)	2.65 (18/36)			
3rd	2.30 (19/33)	2.37 (19/34)	2.32 (16/28)	2.27 (21/36)			
4th	2.02 (21/32)	2.06 (20/31)	2.08 (21/33)				
5th	1.83 (21/29)	1.92 (20/29)	1.86 (20/28)	1.90 (21/30)			
6th			1.77 (21/28)				

Select D for 6th gear

	A	B	C	D	E	F	G
1st	3.36 (15/38)	3.16 (13/31)	3.22 (14/34)	3.07 (16/37)	3.45 (15/39)		
2nd	2.72 (19/39)	2.58 (19/37)	2.80 (18/38)	2.65 (18/36)			
3rd	2.30 (19/33)	2.37 (19/34)	2.32 (16/28)	2.27 (21/36)			
4th	2.02 (21/32)	2.06 (20/31)	2.08 (21/33)				
5th	1.83 (21/29)	1.92 (20/29)	1.86 (20/28)	1.90 (21/30)			
6th				1.69 (22/28)			

Select E for 6th gear

	A	B	C	D	E	F	G
1st	3.62 (15/38)	3.40 (13/31)	3.47 (14/34)	3.30 (16/37)	3.71 (15/39)		
2nd	2.93 (19/39)	2.78 (19/37)	3.01 (18/38)	2.86 (18/36)			
3rd	2.48 (19/33)	2.56 (19/34)	2.50 (16/28)	2.45 (21/36)			
4th	2.18 (21/32)	2.21 (20/31)	2.24 (21/33)				
5th	1.97 (21/29)	2.07 (20/29)	2.00 (20/28)	2.04 (21/30)			
6th					1.77 (21/26)		

Select F for 6th gear

	A	B	C	D	E	F	G
1st	3.13 (15/38)	2.95 (13/31)	3.00 (14/34)	2.86 (16/37)	3.22 (15/39)		
2nd	2.54 (19/39)	2.41 (19/37)	2.61 (18/38)	2.48 (18/36)			
3rd	2.15 (19/33)	2.22 (19/34)	2.17 (16/28)	2.12 (21/36)			
4th	1.89 (21/32)	1.92 (20/31)	1.95 (21/33)				
5th	1.71 (21/29)	1.80 (20/29)	1.73 (20/28)	1.77 (21/30)			
6th						1.55 (24/30)	

Select G for 6th gear

	A	B	C	D	E	F	G
1st	3.24 (15/38)	3.05 (13/31)	3.11 (14/34)	2.96 (16/37)	3.33 (15/39)		
2nd	2.63 (19/39)	2.49 (19/37)	2.70 (18/38)	2.56 (18/36)			
3rd	2.22 (19/33)	2.29 (19/34)	2.24 (16/28)	2.20 (21/36)			
4th	1.95 (21/32)	1.99 (20/31)	2.01 (21/33)				
5th	1.77 (21/29)	1.86 (20/29)	1.79 (20/28)	1.83 (21/30)			
6th							1.69 (22/29)

(4) Rev Spike Control

- This control regulates the power when the engine revolution suddenly increases.
- In case of using this control set "Select Rev Spike Control" in "0" on Constant List and also connect SWITCH (P/No. 27010-0040) with the connector for Rev Spike Control in the racing kit harness. (see "Racing Kit Manual" for the location of the connector).
When setting the knob stand in "B" this control functions. Cancellation is available by setting the knob stand in "A" while running.
- This control can adjust Sensitivity (the sensitivity in starting operation) and Retard Level (the intensity in regulating the power).
Sensitivity has ten steps from 1 to 10 and is most easy to function at 10. Retard Level has ten steps from 1 to 10 and is most intense to regulate at 10. Make the step adjustment for your riding style.
- This control is not available for preventing the vehicle-down.

(5) Launch Control

- This control helps the rider make a stable start by keeping the engine revolution at the fixed level in starting.
- This control functions under the condition that "Select Launch Control" on Constant List is set in "0" and when the engine revolution is over 8000 rpm while standing.
- When this control is in operation the external shift indicator blinks.
- This control ends when shifting up to 2nd or turning off the ignition.
- The engine revolution in starting can be adjusted in the range of the fixed revolution and -2000 rpm to +8000 rpm by changing "Launch Control Rev Limit Shift Value" on Constant List.

5.2 Caution Items when using the I/F Box

5.2.1 Caution when using the I/F Box

1. When connecting/detaching the I/F Box to/from the connector of the motorcycle, keep the ignition switch turned off.
2. Do not use the I/F Box except setting usage of the motorcycle ECU.
3. Never connect the I/F Box with connectors other than the specified connectors.
4. Never run the motorcycle with I/F Box and the PC connected to the ECU.
5. Install the connector for the terminal protection in the motorcycle connector, except when you connect the setting tool.
6. Never use the I/F Box near the place where a strong magnetic field, such as near the televisions and the radios, is generated and static electricity is generated.
7. Do not touch the terminal of the I/F Box connector directly, and do not keep the I/F Box in the place where static electricity is generated.

5.2.2 System Requirements of I/F Box

1. Rated Voltage: 12 V
2. Operation Voltage: 8 ~16 V
3. Ambient Temperature: 5 ~ 35°C

5.2.3 Caution when communicating between Setting Tool and ECU

Confirm the serial communication port of PC before using the setting tool.

It is necessary to match the communication port of the setting tool with the PC side.

1. Confirmation method of the communication port:

Open the Property of the System and check the serial port in the device manager. Correct serial port is COM1.

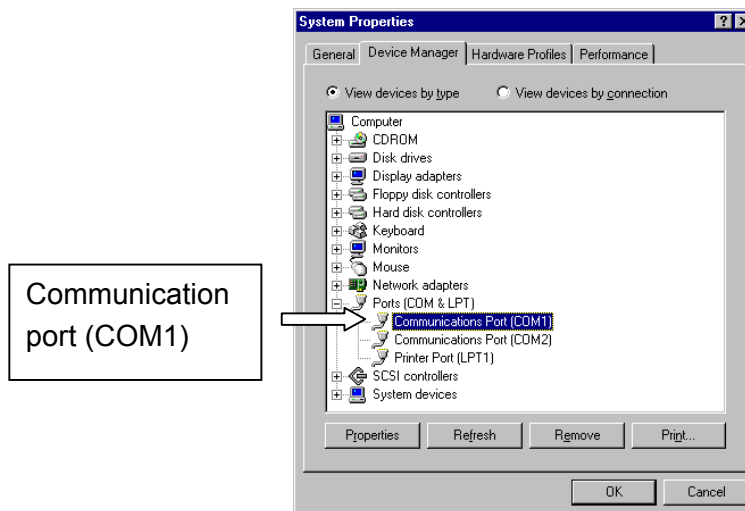


Fig. 54 Device Manager of System Property

When “?” mark or “x” mark is displayed on the COM1, the communication between ECU and PC cannot be done.

Cancel the “?” mark or “x” mark by referring the PC Instruction Manual or Help function of the Windows.

2. Setting Method of the Setting Tool

Select the **RS232C** in the toolbar **Set** of the Setting Tool.

When the Dialog is opened, select the Port on the PC side and click the **OK** button. (If the communication port is **COM1**, select the **Port1**.)

3. Connecting Method of I/F Box

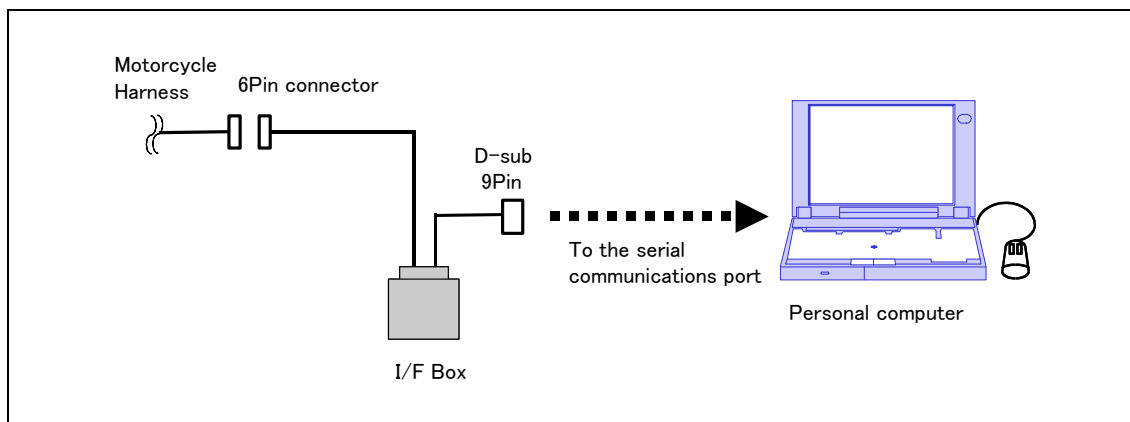


Fig. 55 Connecting Method of I/F Box

5.3 Troubleshooting

Refer the below table when you have troubles.

Table 4 Troubleshooting

NO.	Trouble	Cause	Countermeasure
1	Program cannot be installed.	Operating method not understood	Read manual carefully and understand it.
2	Program does not work.	PC does not match with required specifications.	Select suitable PC. Available OS is Windows XP (JP/US version)
3	PC cannot communicate with ECU.	Incorrect connection of communication cable.	Confirm connection (Refer to the connecting method.)
		Incorrect setting of serial port.	Confirm setting of serial port. COM1 is correct. (Refer to 5.2.3)
		ECU is not powered ON.	Confirm ignition switch is turned ON.
4	Cannot write data to ECU or read data from ECU. (Data Exchange function does not work.)	The Engine is running.	Perform Data Exchange when engine is not running but ignition switch is ON.



KAWASAKI HEAVY INDUSTRIES, LTD.
Consumer Products & Machinery Company

Doc. No. 99929-0233-01